

# School Realities 17

Published March 2018  
ISBN: 978-1-4315-3225-4  
Enquiries: 012 357 3676

In 2017, there were 12 892 273 learners in ordinary public and independent schools (hereinafter collectively referred to as ordinary schools) in South Africa, who attended 25 762 schools and were served by 433 320 educators (see Tables 2 and 3). This data is from databases uploaded on Learner Unit Record Information and Tracking System (LURITS) and Provincial Data Warehouses as at September 2017. Approximately 99.9% of functional ordinary schools were uploaded. No imputation was done on the data. The figures in this publication are preliminary, and the final figures will be published in the more comprehensive *Education Statistics in South Africa 2017*.

**Table 1: List of abbreviations**

<b>ECD</b>	Early Childhood Development	<b>LER</b>	Learner-Educator Ratio
<b>ESR</b>	Educator-School Ratio	<b>LSR</b>	Learner-School Ratio
<b>FET</b>	Further Education and Training	<b>SGB</b>	School Governing Body
<b>GET</b>	General Education and Training	<b>SNE</b>	Special Need Education

**Table 2: Number of learners, educators and schools in the ordinary school sector, by province, in 2017**

Province	Public			Independent			Public and Independent					
	Learners	Educators	Schools	Learners	Educators	Schools	Learners	As % of National Total	Educators	As % of National Total	Schools	As % of National Total
Eastern Cape	1 742 817	60 324	5 389	52 746	3 135	180	1 795 563	13.9	63 459	14.6	5 569	21.6
Free State	683 762	22 601	1 184	17 725	989	71	701 487	5.4	23 590	5.4	1 255	4.9
Gauteng	2 261 935	71 263	2 078	151 290	17 336	831	2 413 225	18.7	88 599	20.4	2 909	11.9
KwaZulu-Natal	2 818 213	90 561	5 879	45 103	2 779	220	2 863 316	22.2	93 340	21.5	6 099	23.7
Limpopo	1 717 779	50 825	3 866	58 688	2 911	159	1 776 467	13.8	53 736	12.4	4 025	15.6
Mpumalanga	1 076 554	33 294	1 726	19 874	1 252	110	1 096 428	8.5	34 546	8.0	1 836	7.1
Northern Cape	290 327	10 091	550	2 050	142	29	292 377	2.3	10 233	2.4	579	2.2
North West	807 263	27 054	1 487	18 513	1 178	69	825 776	6.4	28 232	6.5	1 556	6.0
Western Cape	1 091 482	33 143	1 508	36 152	4 442	268	1 127 634	8.7	37 585	8.7	1 776	6.9
South Africa	12 490 132	399 156	23 796	402 141	34 164	1 966	12 892 273	100.0	433 320	100.0	25 604	100.0

Table 2 shows the number of ordinary public and independent schools, learners and educators there were in 2017. It further shows that the highest and lowest percentages of learners, educators and schools in the ordinary school sector occurred in KwaZulu-Natal and the Northern Cape, respectively. Majority of independent schools were situated in Gauteng (831) followed by KwaZulu-Natal with 220 schools.

**Table 3: Number of learners, educators and schools in the ordinary school sector, by province, from 2015 to 2017**

Province	Learners			Educators			Schools		
	2015	2016	2017	2015	2016	2017	2015	2016	2017
Eastern Cape	1 953 397	1 961 547	1 795 563	64 256	61 629	63 459	5 727	5 676	5 569
Free State	682 704	688 349	701 487	23 661	23 523	23 590	1 332	1 282	1 255
Gauteng	2 262 319	2 326 584	2 413 225	79 354	82 078	88 599	2 780	2 813	2 909
KwaZulu-Natal	2 881 518	2 877 544	2 863 316	86 493	89 799	93 340	6 137	6 142	6 099
Limpopo	1 753 734	1 765 555	1 776 467	55 930	54 418	53 736	4 045	4 018	4 025
Mpumalanga	1 079 280	1 074 352	1 096 428	35 153	34 404	34 546	1 862	1 847	1 836
Northern Cape	290 139	292 595	292 377	9 162	9 179	10 233	581	575	579
North West	813 873	829 467	825 776	25 126	26 065	28 232	1 544	1 534	1 556
Western Cape	1 097 509	1 116 572	1 127 634	36 958	37 516	37 585	1 683	1 687	1 776
South Africa	12 814 473	12 932 565	12 892 273	416 093	418 611	433 320	25 691	25 574	25 604

Sources:

2015/16: As published in *School Realities 2015*

From the figures reflected in Table 3 it can be deduced that, from 2015 to 2017, the number of learners increased by 0.6% nationally, while the number of educators and schools increased by 4.1% and 0.3% respectively. Nearly all provinces experienced an increase in learner numbers.

# EMIS

Table 4: Number of learners in ordinary schools, by province, sector, gender and grade, in 2017

Province	Sector	Gender	Pre-Grade R	GET Band												GET Band	
				Foundation Phase					Intermediate Phase				Senior Phase				
				Gr. R	Gr. 1	Gr. 2	Gr. 3	Total	Gr. 4	Gr. 5	Gr. 6	Total	Gr. 7	Gr. 8	Gr. 9		Total
EASTERN CAPE	INDEPENDENT	Female	586	1 913	2 640	2 618	2 601	9 772	2 433	2 261	2 157	6 851	1 903	1 691	1 456	5 050	21 673
		Total	1 204	3 960	5 401	5 415	5 228	20 004	4 849	4 601	4 170	13 620	3 583	3 320	2 824	9 727	43 351
	PUBLIC	Female	1 084	64 970	75 589	70 973	71 548	283 080	72 645	69 100	65 804	207 549	62 268	61 600	57 509	181 377	672 006
		Total	2 095	132 785	161 482	150 992	150 802	596 061	155 151	143 607	134 246	433 004	126 037	126 650	114 975	367 662	1 396 727
	BOTH	Female	1 670	66 883	78 229	73 591	74 149	292 852	75 078	71 361	67 961	214 400	64 171	63 291	58 965	186 427	693 679
		Male	1 629	69 862	88 654	82 816	81 881	323 213	84 922	76 847	70 455	232 224	65 449	66 679	58 834	190 962	746 399
		Total	3 299	136 745	166 883	156 407	156 030	616 065	160 000	148 208	138 416	446 624	129 620	129 970	117 799	377 389	1 440 078
FREE STATE	INDEPENDENT	Female	290	620	921	887	795	3 223	758	641	585	1 984	573	683	638	1 894	7 101
		Total	535	1 237	1 875	1 805	1 608	6 525	1 561	1 334	1 240	4 135	1 163	1 398	1 148	3 709	14 369
	PUBLIC	Female	651	19 279	30 410	29 129	28 734	107 552	29 643	28 451	26 920	85 014	25 300	28 342	24 263	77 905	270 471
		Total	1 210	38 764	63 081	60 299	58 889	221 033	63 266	58 444	53 863	175 573	51 928	57 941	46 819	156 688	553 294
	BOTH	Female	941	19 899	31 331	30 016	29 529	110 775	30 401	29 092	27 505	86 998	25 873	29 025	24 901	79 799	277 572
		Male	804	20 102	33 625	32 088	30 968	116 783	34 426	30 686	27 598	92 710	27 218	30 314	23 066	80 598	290 091
		Total	1 745	40 001	64 956	62 104	60 497	227 558	64 827	59 778	55 103	179 708	53 091	59 339	47 967	160 397	567 663
GAUTENG	INDEPENDENT	Female	2 440	5 448	8 090	7 689	7 036	28 263	6 149	5 641	5 071	16 861	4 803	5 307	4 682	14 792	59 916
		Total	5 021	11 177	16 451	15 508	14 121	57 257	12 512	11 420	10 145	34 077	9 562	10 405	9 231	29 198	120 532
	PUBLIC	Female	1 857	57 459	107 086	103 820	101 841	370 206	97 567	93 954	89 209	280 730	84 578	83 528	79 411	247 517	898 453
		Total	3 749	116 162	223 501	213 557	206 646	759 866	200 599	188 638	177 267	566 504	167 010	170 824	155 683	493 517	1 819 887
	BOTH	Female	4 297	62 907	115 176	111 509	108 877	398 469	103 716	99 595	94 280	297 591	89 381	88 835	84 093	262 309	958 369
		Male	4 473	64 432	124 776	117 556	111 890	418 654	109 395	100 463	93 132	302 990	87 191	92 394	80 821	260 406	982 050
		Total	8 770	127 339	239 952	229 065	220 767	817 123	213 111	200 058	187 412	600 581	176 572	181 229	164 914	522 715	1 940 419
KWAZULU NATAL	INDEPENDENT	Female	800	1 835	2 206	2 092	2 017	8 150	1 843	1 532	1 533	4 908	1 406	1 695	1 551	4 652	17 710
		Total	1 566	3 554	4 500	4 191	3 969	16 214	3 567	3 088	2 922	9 577	2 622	3 037	2 787	8 446	34 237
	PUBLIC	Female	1 379	89 761	118 354	112 696	113 253	434 064	112 573	108 944	104 750	326 267	100 619	100 345	99 107	300 071	1 060 402
		Total	2 634	181 198	250 144	235 351	234 506	901 199	236 650	224 102	211 726	672 478	202 597	212 620	203 292	618 509	2 192 186
	BOTH	Female	2 179	91 596	120 560	114 788	115 270	442 214	114 416	110 476	106 283	331 175	102 025	102 040	100 658	304 723	1 078 112
		Male	2 021	93 156	134 084	124 754	123 205	475 199	125 801	116 714	108 365	350 880	103 194	113 617	105 421	322 232	1 148 311
		Total	4 200	184 752	254 644	239 542	238 475	917 413	240 217	227 190	214 648	682 055	205 219	215 657	206 079	626 955	2 226 423
LIMPOPO	INDEPENDENT	Female	471	2 463	3 099	2 835	2 778	11 175	2 563	2 295	2 044	6 902	1 832	1 963	1 785	5 580	23 657
		Total	973	4 848	6 218	5 701	5 446	22 213	5 200	4 484	4 060	13 744	3 762	3 725	3 525	11 012	46 969
	PUBLIC	Female	105	65 320	68 544	66 548	67 318	267 730	67 098	63 543	59 376	190 017	55 196	58 259	58 357	171 812	629 559
		Total	220	132 095	144 414	139 168	139 450	555 127	142 891	130 125	119 553	392 569	111 473	126 771	122 180	360 424	1 308 120
	BOTH	Female	576	67 783	71 643	69 383	70 096	278 905	69 661	65 838	61 420	196 919	57 028	60 222	60 142	177 392	653 216
		Male	617	69 160	78 989	75 486	74 800	298 435	78 430	68 771	62 193	209 394	58 207	70 274	65 563	194 044	701 873
		Total	1 193	136 943	150 632	144 869	144 896	577 340	148 091	134 609	123 613	406 313	115 235	130 496	125 705	371 436	1 355 089
MPUMALANGA	INDEPENDENT	Female	113	690	1 056	1 059	1 016	3 821	924	762	657	2 343	603	347	388	1 338	7 502
		Total	207	1 342	2 182	2 224	2 080	7 828	1 880	1 562	1 383	4 825	1 215	723	817	2 755	15 408
	PUBLIC	Female	142	35 348	44 693	44 477	44 258	168 776	43 367	41 007	39 399	123 773	37 713	38 473	37 923	114 109	406 658
		Total	270	71 256	94 544	93 185	92 054	351 039	91 560	85 084	80 275	256 919	76 570	81 213	76 969	234 752	842 710
	BOTH	Female	255	36 038	45 749	45 536	45 274	172 597	44 291	41 769	40 056	126 116	38 316	38 820	38 311	115 447	414 160
		Male	222	36 560	50 977	49 873	48 860	186 270	49 149	44 877	41 602	135 628	39 469	43 116	39 475	122 060	443 958
		Total	477	72 598	96 726	95 409	94 134	358 867	93 440	86 646	81 658	261 744	77 785	81 936	77 786	237 507	858 118
NORTH WEST	INDEPENDENT	Female	39	748	1 114	1 046	956	3 864	831	771	676	2 278	638	581	497	1 716	7 858
		Total	69	1 494	2 225	2 141	1 956	7 816	1 792	1 490	1 396	4 678	1 278	1 155	1 008	3 441	15 935
	PUBLIC	Female	81	26 275	35 552	35 334	35 650	132 811	35 885	32 890	31 780	100 555	29 523	31 943	29 124	90 590	323 956
		Total	172	52 697	74 561	74 411	73 437	275 106	75 744	66 872	63 234	205 850	58 855	66 233	57 569	182 657	663 613
	BOTH	Female	120	27 023	36 666	36 380	36 606	136 675	36 716	33 661	32 456	102 833	30 161	32 524	29 621	92 306	331 814
		Male	121	27 168	40 120	40 172	38 787	146 247	40 820	34 701	32 174	107 695	29 972	34 864	28 956	93 792	347 734
		Total	241	54 191	76 786	76 552	75 393	282 922	77 536	68 362	64 630	210 528	60 133	67 388	58 577	186 098	679 548
NORTHERN CAPE	INDEPENDENT	Female	29	79	71	69	53	272	50	37	29	116	20	129	146	295	683
		Total	48	188	155	148	116	607	127	81	60	268	41	230	232	503	1 378
	PUBLIC	Female	170	9 518	13 160	12 693	12 407	47 778	12 644	11 745	11 269	35 658	11 124	11 311	10 231	32 666	116 102
		Total	350	19 314	28 071	26 215	25 559	99 159	26 724	24 154	22 776	73 654	22 591	22 741	20 178	65 510	238 323
	BOTH	Female	199	9 597	13 231	12 762	12 460	48 050	12 694	11 782	11 298	35 774	11 144	11 440	10 377	32 961	116 785
		Male	199	9 905	14 995	13 601	13 215	51 716	14 157	12 453	11 538	38 148	11 488	11 531	10 033	33 052	122 916
		Total	398	19 502	28 226	26 363	25 675	99 766	26 851	24 235	22 836	73 922	22 632	22 971	20 410	66 013	239 701
WESTERN CAPE	INDEPENDENT	Female	413	1 033	1 772	1 702	1 564	6 071	1 377	1 236	1 089	3 702	1 006	1 563	1 442	4 011	13 784
		Total	704	2 110	3 499	3 458	3 194	12 261	2 759	2 493	2 242	7 494	2 093	3 068	2 818	7 979	27 734
	PUBLIC	Female	893	32 587	50 268	52 410	52 264	187 529	50 237	47 411	43 981	141 629	41 790	40 898	38 339	121 027	450 185

# EMIS

Table 4: Number of learners in ordinary schools, by province, sector, gender and grade, in 2017 (concluded)

Province	Sector	Gender	FET band				Other	Total Primary (Gr1-7)	Total Secondary (Gr8-12)	Total (Gr1-12)	Grand Total
			Gr. 10	Gr. 11	Gr. 12	Total					
EASTERN CAPE	INDEPENDENT	Female	1 271	1 324	1 827	4 422	0	16 613	7 569	24 182	26 681
		Total	2 451	2 509	3 231	8 191	0	33 247	14 335	47 582	52 746
	PUBLIC	Female	69 581	64 032	47 249	180 862	0	487 927	299 971	787 898	853 952
		Total	139 962	119 292	84 741	343 995	0	1 022 317	585 620	1 607 937	1 742 817
	BOTH	Female	70 852	65 356	49 076	185 284	0	504 540	307 540	812 080	880 633
		Male	71 561	56 445	38 896	166 902	0	551 024	292 415	843 439	914 930
		Total	142 413	121 801	87 972	352 186	0	1 055 564	599 955	1 655 519	1 795 563
FREE STATE	INDEPENDENT	Female	546	509	419	1 474	0	5 160	2 795	7 955	8 865
		Total	1 086	950	785	2 821	0	10 586	5 367	15 953	17 725
	PUBLIC	Female	29 990	21 621	16 707	68 318	0	198 586	120 923	319 510	339 440
		Total	58 933	40 397	29 928	129 258	0	409 770	234 018	643 788	683 762
	BOTH	Female	30 536	22 130	17 126	69 792	0	203 747	123 718	327 465	348 305
		Male	29 483	19 217	13 587	62 287	0	216 609	115 667	332 276	353 182
		Total	60 019	41 347	30 713	132 079	0	420 356	239 385	659 741	701 487
GAUTENG	INDEPENDENT	Female	4 706	4 550	4 123	13 379	20	44 479	23 368	67 847	75 755
		Total	9 131	8 690	7 854	25 675	62	89 719	45 311	135 030	151 290
	PUBLIC	Female	93 961	76 435	58 422	228 818	1 000	678 055	391 757	1 069 812	1 130 128
		Total	188 069	142 411	105 725	436 205	2 094	1 377 218	762 712	2 139 930	2 261 935
	BOTH	Female	98 667	80 985	62 545	242 197	1 020	722 534	415 125	1 137 659	1 205 883
		Male	98 533	70 116	51 034	219 683	1 136	744 403	392 898	1 137 301	1 207 342
		Total	197 200	151 101	113 579	461 880	2 156	1 466 937	808 023	2 274 960	2 413 225
KWAZULU-NATAL	INDEPENDENT	Female	1 609	1 588	1 952	5 149	175	12 629	8 395	21 024	23 834
		Total	2 834	2 830	3 347	9 011	289	24 859	14 835	39 694	45 103
	PUBLIC	Female	118 337	119 112	87 534	324 983	22	771 189	524 435	1 295 624	1 386 786
		Total	240 713	225 027	157 538	623 278	115	1 595 076	1 039 190	2 634 266	2 818 213
	BOTH	Female	119 946	120 700	89 486	330 132	197	783 818	532 830	1 316 648	1 410 620
		Male	123 601	107 157	71 399	302 157	207	836 117	521 195	1 357 312	1 452 696
		Total	243 547	227 857	160 885	632 289	404	1 619 935	1 054 025	2 673 960	2 863 316
LIMPOPO	INDEPENDENT	Female	1 825	1 787	2 104	5 716	0	17 446	9 464	26 910	29 844
		Total	3 583	3 387	3 776	10 746	0	34 871	17 996	52 867	58 688
	PUBLIC	Female	80 573	72 867	56 657	210 097	12	447 623	326 713	774 336	839 773
		Total	168 847	137 701	102 869	409 417	22	927 074	658 368	1 585 442	1 717 779
	BOTH	Female	82 398	74 654	58 761	215 813	12	465 069	336 177	801 246	869 617
		Male	90 032	66 434	47 884	204 350	10	496 876	340 187	837 063	906 850
		Total	172 430	141 088	106 645	420 163	22	961 945	676 364	1 638 309	1 776 467
MPUMALANGA	INDEPENDENT	Female	454	613	1 108	2 175	0	6 077	2 910	8 987	9 790
		Total	967	1 307	1 985	4 259	0	12 526	5 799	18 325	19 874
	PUBLIC	Female	46 629	42 931	33 798	123 358	0	294 914	199 754	494 668	530 158
		Total	93 136	79 471	60 967	233 574	0	613 272	391 756	1 005 028	1 076 554
	BOTH	Female	47 083	43 544	34 906	125 533	0	300 991	202 664	503 655	539 948
		Male	47 020	37 234	28 046	112 300	0	324 807	194 891	519 698	556 480
		Total	94 103	80 778	62 952	237 833	0	625 798	397 555	1 023 353	1 096 428
NORTH WEST	INDEPENDENT	Female	478	433	406	1 317	0	6 032	2 395	8 427	9 214
		Total	908	811	790	2 509	0	12 278	4 672	16 950	18 513
	PUBLIC	Female	31 817	24 437	18 817	75 071	49	236 614	136 138	372 752	399 157
		Total	62 766	45 803	34 800	143 369	109	487 114	267 171	754 285	807 263
	BOTH	Female	32 295	24 870	19 223	76 388	49	242 646	138 533	381 179	408 371
		Male	31 379	21 744	16 367	69 490	60	256 746	133 310	390 056	417 405
		Total	63 674	46 614	35 590	145 878	109	499 392	271 843	771 235	825 776
NORTHERN CAPE	INDEPENDENT	Female	140	152	126	418	0	329	693	1 022	1 130
		Total	229	214	181	624	0	728	1 086	1 814	2 050
	PUBLIC	Female	12 332	9 318	5 916	27 566	0	85 042	49 108	134 150	143 838
		Total	24 008	16 983	10 663	51 654	0	176 090	94 573	270 663	290 327
	BOTH	Female	12 472	9 470	6 042	27 984	0	85 371	49 801	135 172	144 968
		Male	11 765	7 727	4 802	24 294	0	91 447	45 858	137 305	147 409
		Total	24 237	17 197	10 844	52 278	0	176 818	95 659	272 477	292 377
WESTERN CAPE	INDEPENDENT	Female	1 322	1 249	1 243	3 814	0	9 746	6 819	16 565	18 011
		Total	2 656	2 573	2 485	7 714	0	19 738	13 600	33 338	36 152
	PUBLIC	Female	40 240	34 900	27 986	103 126	0	338 361	182 363	520 724	554 204
		Total	75 646	62 428	49 451	187 525	0	685 599	338 896	1 024 495	1 091 482
	BOTH	Female	41 562	36 149	29 229	106 940	0	348 107	189 182	537 289	572 215
		Male	36 740	28 852	22 707	88 299	0	357 230	163 314	520 544	555 419
		Total	78 302	65 001	51 936	195 239	0	705 337	352 496	1 057 833	1 127 634
SOUTH AFRICA	INDEPENDENT	Female	12 351	12 205	13 308	37 864	195	118 511	64 408	182 919	203 124
		Male	11 494	11 066	11 126	33 686	156	120 041	58 593	178 634	199 017
		Total	23 845	23 271	24 434	71 550	351	238 552	123 001	361 553	402 141
	PUBLIC	Female	523 460	465 653	353 086	1 342 199	1 083	3 538 312	2 231 162	5 769 474	6 177 436
		Male	528 620	403 860	283 596	1 216 076	1 257	3 755 218	2 141 142	5 896 360	6 312 696
		Total	1 052 080	869 513	636 682	2 558 275	2 340	7 293 530	4 372 304	11 665 834	12 490 132
	BOTH	Female	535 811	477 858	366 394	1 380 063	1 278	3 656 823	2 295 570	5 952 393	6 380 560
		Male	540 114	414 926	294 722	1 249 762	1 413	3 875 259	2 199 735	6 074 994	6 511 713
		Total	1 075 925	892 784	661 116	2 629 825	2 691	7 532 082	4 495 305	12 027 387	12 892 273

Note 1: Data exclude learners at stand-alone ECD sites and special schools.

Note 2: Owing to a shortage of space in the table, the male enrolment figures for ordinary public and independent schools are intentionally omitted in the provincial data, but are included in the national data.

1) Learners not grouped in any of the grades provided

**Figure 1: Percentage distribution of learners in ordinary schools, by phase, in 2017**

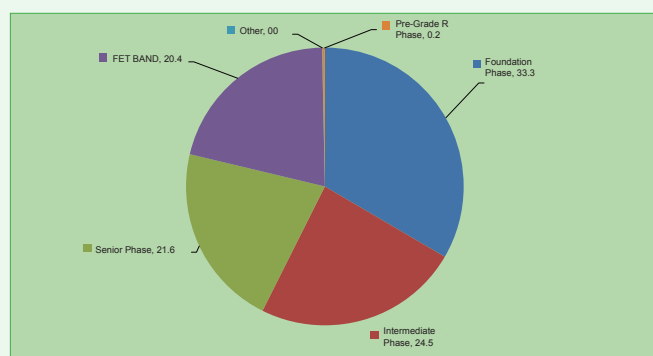


Figure 1 reveals that the highest proportion of learners in ordinary schools nationally was located in the foundation phase (33.3%) followed by the intermediate phase and the senior phase with 24.5% and 21.6%.

**Figure 2: Percentage distribution of female learners in ordinary schools, by grade, in 2017**

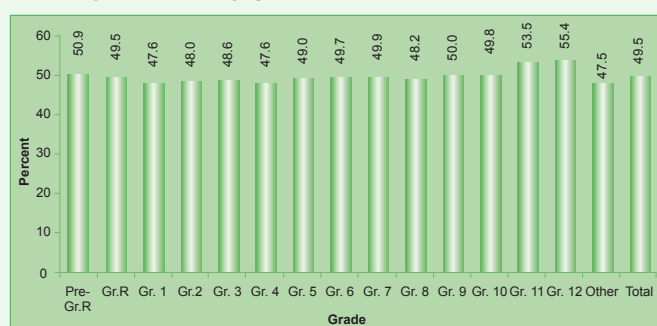


Figure 2 shows that, in the schooling system, there were overall more male than female (49.5%) learners, although there were more females than males in the Secondary Phase. The lowest percentage of female learners in ordinary schools nationally was in Grades 1 and 4 (47.6%) and the highest percentage was in Grades 11 and 12 (53.5% and 55.4% respectively).

**Figure 3: Percentage distribution of learners in ordinary schools, by grade, in 2017**

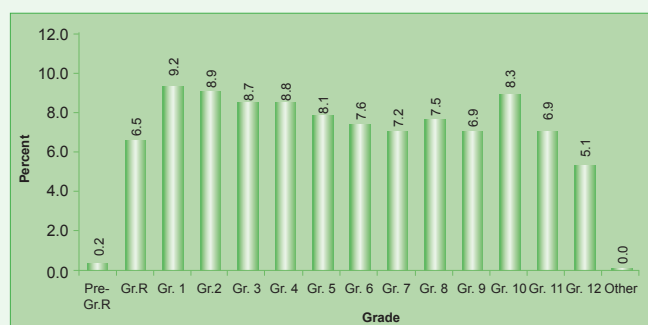


Figure 3 indicates that enrolment is generally very high in Grade 1 (9.2%) and declines as learners move to higher grades within the schooling system with 5.1% in Grade 12.

Table 5 reflects the following indicators:

- (a) When counting all educators, the LER for ordinary public schools nationally was 31.3, while, when counting only state-paid educators in these schools, the LER increased to 33.4.

**Table 5: Indicators for ordinary PUBLIC schools, by province, in 2017**

Province	LER		LSR	ESR
	State-paid and SGB-paid Educators	State-Paid Educators <sup>1)</sup>		
Eastern Cape	28.9	33.9	323	11.2
Free State	30.3	32.2	578	19.1
Gauteng	31.7	36.0	1 025	32.3
KwaZulu-Natal	31.1	31.6	479	15.4
Limpopo	33.8	33.2	444	13.1
Mpumalanga	32.4	32.9	624	19.2
Northern Cape	28.8	31.4	528	18.3
North West	29.8	31.9	543	18.2
Western Cape	32.9	35.8	724	22.0
South Africa	31.3	33.4	525	16.8

1) Underlying data not shown in the publication.

- (b) The LSR for ordinary public schools nationally was 525, with six provinces (Free State, Gauteng, Mpumalanga, Northern Cape, North West and the Western Cape) higher than the national average.

- (c) The ESR for ordinary public schools nationally was 16.8, with six provinces (Free State, Gauteng, Mpumalanga, Northern Cape, North West and Western Cape) higher than the national average.

**Figure 4: Frequency distribution of learners in ordinary PUBLIC schools in 2017**

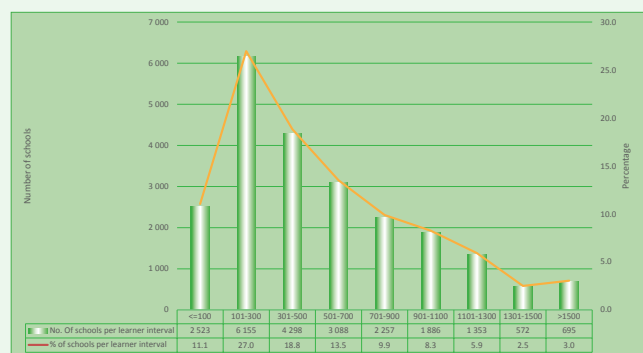


Figure 4, a histogram, shows that the highest number of ordinary public schools nationally (6 155, or 27.0%) was in the 101 to 300 learner interval. Furthermore, there were 2 523 schools (11.1%) and 695 schools (3.0%) in, respectively, the 100 and below learner interval and the above 1 500 learner interval.

**Figure 5: Frequency distribution of LER in ordinary PUBLIC schools in 2017**

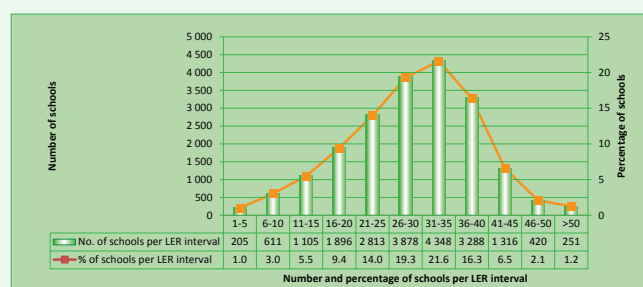


Figure 5, a histogram, reflects that the highest number of ordinary public schools nationally (4 348, or 21.6%) was in the 31 to 35 LER interval. Furthermore, there were 205 schools (1.0%) and 251 schools (1.2%) in, respectively, the one to five LER interval and the above 50 LER interval.