

School Realities

Published September 2013
ISBN: 978-1-4315-1859-3
Enquiries: 012 357 3676

In 2013, there were 12 489 648 learners in ordinary public and independent schools (hereinafter collectively referred to as ordinary schools) in South Africa, who attended 25 720 schools and were served by 425 023 educators (see Tables 2 and 3). These data are from the survey conducted on the 10th school day. Approximately 99.9% of functional ordinary schools submitted the survey forms. No imputation was done on the data. The figures in this publication are preliminary, and the final figures will be published in the more comprehensive *Education Statistics in South Africa 2013*.

Table 1: List of abbreviations

ECD Early Childhood Development	LER Learner-Educator Ratio
ESR Educator-School Ratio	LSR Learner-School Ratio
FET Further Education and Training	SGB School Governing Body
GET General Education and Training	SNE Special Needs Education

Table 2: Number of learners, educators and schools in the ordinary school sector, by province, in 2013

Province	Public			Independent			Public and Independent					
	Learners	Educators	Schools	Learners	Educators	Schools	Learners	As % of National Total	Educators	As % of National Total	Schools	As % of National Total
Eastern Cape	1 881 605	63 137	5 562	56 473	2 870	171	1 938 078	15.5	66 007	15.5	5 733	22.3
Free State	649 806	23 721	1 327	14 702	754	69	664 508	5.3	24 475	5.8	1 396	5.4
Gauteng	1 899 542	59 357	2 056	229 984	15 466	593	2 129 526	17.1	74 823	17.6	2 649	10.3
KwaZulu-Natal	2 798 975	91 285	5 937	67 595	4 772	219	2 866 570	23.0	96 057	22.6	6 156	23.9
Limpopo	1 662 106	54 708	3 924	52 726	2 400	143	1 714 832	13.7	57 108	13.4	4 067	15.8
Mpumalanga	1 025 859	33 380	1 768	26 948	1 556	117	1 052 807	8.4	34 936	8.2	1 885	7.3
Northern Cape	279 445	8 725	553	3 186	247	20	282 631	2.3	8 972	2.1	573	2.2
North West	773 040	25 169	1 551	15 221	1 025	55	788 261	6.3	26 194	6.2	1 606	6.2
Western Cape	1 005 466	32 347	1 458	46 969	4 104	197	1 052 435	8.4	36 451	8.6	1 655	6.4
South Africa	11 975 844	391 829	24 136	513 804	33 194	1 584	12 489 648	100.0	425 023	100.0	25 720	100.0

Table 2 shows the number of ordinary public and independent schools, learners and educators there were in 2013. It further shows that the highest and lowest percentages of learners, educators and schools in the ordinary school sector occurred in KwaZulu-Natal and the Northern Cape, respectively. Majority of independent schools were situated in Gauteng (593) followed by KwaZulu-Natal with 219 schools.

Table 3: Number of learners, educators and schools in the ordinary school sector, by province, from 2011 to 2013

Province	Learners			Educators			Schools		
	2011	2012	2013	2011	2012	2013	2011	2012	2013
Eastern Cape	1 963 578	1 951 523	1 938 078	68 499	67 936	66 007	5 755	5 754	5 733
Free State	658 010	661 974	664 508	24 057	24 828	24 475	1 437	1 419	1 396
Gauteng	2 022 050	2 075 387	2 129 526	71 532	73 960	74 823	2 559	2 611	2 649
KwaZulu-Natal	2 847 378	2 877 969	2 866 570	93 266	94 932	96 057	6 180	6 176	6 156
Limpopo	1 695 524	1 715 778	1 714 832	58 016	57 670	57 108	4 073	4 078	4 067
Mpumalanga	1 046 551	1 054 783	1 052 807	34 623	34 664	34 936	1 931	1 920	1 885
Northern Cape	274 745	277 494	282 631	8 899	8 864	8 972	611	580	573
North West	765 120	775 142	788 261	25 897	25 924	26 194	1 669	1 645	1 606
Western Cape	1 015 038	1 038 019	1 052 435	35 819	36 389	36 451	1 636	1 643	1 655
South Africa	12 287 994	12 428 069	12 489 648	420 608	425 167	425 023	25 851	25 826	25 720

Sources:

2011: As published in Education Statistics in South Africa 2011.

2012: As published in School Realities 2012.

From the figures reflected in Table 3 it can be deduced that, from 2011 to 2013, the number of learners and educators nationally increased by 1.6% and 1.0%, respectively, while the number of schools decreased by 0.5%. The Eastern Cape was the only province that experienced a drop in learner and educator numbers.

EMIS

Table 4: Number of learners in ordinary schools, by province, sector, gender and grade, in 2013

Province	Sector	Gender	Pre-Grade R Phase	GET Band													Total (GET Band)
				Foundation Phase					Intermediate Phase				Senior Phase				
			Pre-Gr. R	Gr. R	Gr. 1	Gr. 2	Gr. 3	Total	Gr. 4	Gr. 5	Gr. 6	Total	Gr. 7	Gr. 8	Gr. 9	Total	
Eastern Cape	Independent	Female	1 156	1 964	2 655	2 689	2 471	9 779	2 276	1 971	1 688	5 935	1 669	1 724	1 781	5 174	20 888
		Total	2 344	3 921	5 647	5 458	4 918	19 944	4 512	3 942	3 491	11 945	3 405	3 412	3 562	10 379	42 268
	Public	Female	4 442	72 705	92 528	83 331	76 499	325 063	72 157	67 630	66 507	206 294	67 123	67 186	71 352	205 661	737 018
		Total	8 653	147 910	196 683	175 252	159 010	678 855	152 311	141 132	138 320	431 763	139 139	135 779	142 728	417 646	1 528 264
	Both	Female	5 598	74 669	95 183	86 020	78 970	334 842	74 433	69 601	68 195	212 229	68 792	68 910	73 133	210 835	757 906
		Male	5 399	77 162	107 147	94 690	84 958	363 957	82 390	75 473	73 616	231 479	73 752	70 281	73 157	217 190	812 626
	Total	10 997	151 831	202 330	180 710	163 928	698 799	156 823	145 074	141 811	443 708	142 544	139 191	146 290	428 025	1 570 532	
	Free State	Independent	Female	215	361	726	628	604	2 319	534	500	471	1 505	470	538	667	1 675
Total			397	734	1 510	1 351	1 249	4 844	1 107	1 004	1 017	3 128	919	1 056	1 361	3 336	11 308
Public		Female	430	15 480	31 017	29 886	26 997	103 380	24 646	24 763	24 269	73 678	22 908	23 334	32 206	78 448	255 506
		Total	799	31 436	65 405	62 224	54 935	214 000	51 717	50 663	49 531	151 911	45 842	47 422	66 737	160 001	525 912
Both		Female	645	15 841	31 743	30 514	27 601	105 699	25 180	25 263	24 740	75 183	23 378	23 872	32 873	80 123	261 005
		Male	551	16 329	35 172	33 061	28 583	113 145	27 644	26 404	25 808	79 856	23 383	24 606	35 225	83 214	276 215
Total		1 196	32 170	66 915	63 575	56 184	218 844	52 824	51 667	50 548	155 039	46 761	48 478	68 098	163 337	537 220	
Guateng		Independent	Female	4 045	6 345	11 575	10 547	9 293	37 760	8 404	7 847	7 368	23 619	7 190	8 864	8 409	24 463
	Total		8 204	12 839	23 423	20 878	18 576	75 716	16 879	15 766	14 780	47 425	14 100	17 020	16 202	47 322	170 463
	Public	Female	2 519	45 587	91 755	86 481	80 648	304 471	74 503	72 296	70 631	217 430	70 054	70 370	76 106	216 530	738 431
		Total	4 931	91 669	190 515	177 064	162 872	622 120	151 481	144 600	141 683	437 764	139 566	142 741	155 480	437 787	1 497 671
	Both	Female	6 564	51 932	103 330	97 028	89 941	342 231	82 907	80 143	77 999	241 049	77 244	79 234	84 515	240 993	824 273
		Male	6 571	52 576	110 608	100 914	91 507	355 605	85 453	80 223	78 464	244 140	76 422	80 527	87 167	244 116	843 861
	Total	13 135	104 508	213 938	197 942	181 448	697 836	168 360	160 366	156 463	485 189	153 666	159 761	171 682	485 109	1 668 134	
	KwaZulu-Natal	Independent	Female	1 494	2 041	2 707	2 528	2 354	9 630	2 107	1 976	1 979	6 062	1 913	2 730	2 630	7 273
Total			3 004	4 113	5 453	5 033	4 614	19 213	4 135	3 843	3 737	11 715	3 643	5 080	4 974	13 697	44 625
Public		Female	2 826	90 854	126 519	114 597	107 578	439 548	98 364	96 247	96 462	291 073	97 901	106 977	110 727	315 605	1 046 226
		Total	5 607	183 859	267 942	238 284	221 438	911 523	204 496	200 435	198 726	603 657	200 216	222 330	225 505	648 051	2 163 231
Both		Female	4 320	92 895	129 226	117 125	109 932	449 178	100 471	98 223	98 441	297 135	99 814	109 707	113 357	322 878	1 069 191
		Male	4 291	95 077	144 169	126 192	116 120	481 558	108 160	106 055	104 022	318 237	104 045	117 703	117 122	338 870	1 138 665
Total		8 611	187 972	273 395	243 317	226 052	930 736	208 631	204 278	202 463	615 372	203 859	227 410	230 479	661 748	2 207 856	
Limpopo		Independent	Female	431	1 899	2 517	2 307	2 076	8 799	1 837	1 902	1 670	5 409	1 678	2 108	2 136	5 922
	Total		885	3 774	4 984	4 594	4 132	17 484	3 779	3 637	3 413	10 829	3 275	4 054	4 144	11 473	39 786
	Public	Female	132	57 789	69 234	65 820	60 175	253 018	54 430	53 961	54 193	162 584	55 405	56 991	84 418	196 814	612 416
		Total	251	116 255	144 753	135 188	124 285	520 481	114 164	112 806	112 889	339 859	113 930	116 784	184 770	415 484	1 275 824
	Both	Female	563	59 688	71 751	68 127	62 251	261 817	56 267	55 863	55 863	167 993	57 083	59 099	86 554	202 736	632 546
		Male	573	60 341	77 986	71 655	66 166	276 148	61 676	60 580	60 439	182 695	60 122	61 739	102 360	224 221	683 064
	Total	1 136	120 029	149 737	139 782	128 417	537 965	117 943	116 443	116 302	350 688	117 205	120 838	188 914	426 957	1 315 610	
	Mpumalanga	Independent	Female	384	883	1 340	1 230	1 103	4 556	982	934	847	2 763	825	764	744	2 333
Total			801	1 767	2 795	2 536	2 254	9 352	1 962	1 768	1 669	5 399	1 626	1 579	1 495	4 700	19 451
Public		Female	1 023	27 847	46 961	43 374	40 337	158 519	36 674	36 518	37 116	110 308	38 039	42 025	41 940	122 004	390 831
		Total	2 011	56 207	99 042	90 770	83 227	329 246	77 611	76 397	75 913	229 921	77 256	86 482	83 379	247 117	806 284
Both		Female	1 407	28 730	48 301	44 604	41 440	163 075	37 656	37 452	37 963	113 071	38 864	42 789	42 684	124 337	400 483
		Male	1 405	29 244	53 536	48 702	44 041	175 523	41 917	40 713	39 619	122 249	40 018	45 272	42 190	127 480	425 252
Total		2 812	57 974	101 837	93 306	85 481	338 598	79 573	78 165	77 582	235 320	78 882	88 061	84 874	251 817	825 735	
Northern Cape		Independent	Female	92	117	125	114	93	449	81	79	55	215	61	194	210	465
	Total		184	244	297	230	176	947	148	147	114	409	128	303	328	759	2 115
	Public	Female	477	8 166	13 513	12 304	11 585	45 568	11 683	11 028	11 123	33 834	10 929	10 713	11 433	33 075	112 477
		Total	947	16 590	28 248	25 352	23 856	94 046	24 601	22 926	22 490	70 017	21 939	21 738	22 883	66 560	230 623
	Both	Female	569	8 283	13 638	12 418	11 678	46 017	11 764	11 107	11 178	34 049	10 990	10 907	11 643	33 540	113 606
		Male	562	8 551	14 907	13 164	12 354	48 976	12 985	11 966	11 426	36 377	11 077	11 134	11 568	33 779	119 132
	Total	1 131	16 834	28 545	25 582	24 032	94 993	24 749	23 073	22 604	70 426	22 067	22 041	23 211	67 319	232 738	
	North West	Independent	Female	157	658	853	742	715	2 968	603	520	518	1 641	562	535	499	1 596
Total			297	1 285	1 683	1 548	1 436	5 952	1 250	1 068	1 013	3 331	1 013	1 020	1 014	3 047	12 330
Public		Female	248	23 133	36 563	35 520	33 514	128 730	31 430	29 813	29 038	90 281	28 147	28 421	32 733	89 301	308 312
		Total	494	46 459	76 428	73 474	69 137	265 498	65 688	61 206	58 913	185 807	56 957	57 641	67 199	181 797	633 102
Both		Female	405	23 791	37 416	36 262	34 229	131 698	32 033	30 333	29 556	91 922	28 709	28 956	33 232	90 897	314 517
		Male	386	23 953	40 695	38 760	36 344	139 752	34 905	31 941	30 370	97 216	29 261	29 705	34 981	93 947	330 915
Total		791	47 744	78 111	75 022	70 573	271 450	66 938	62 274	59 926	189 138	57 970	58 661	68 213	184 844	645 432	
Western Cape		Independent	Female	1 277	1 658	2 111	1 909	1 802	7 480	1 666	1 540	1 498	4 704	1 403	1 676	1 740	4 819
	Total		2 361	3 367	4 181	3 845	3 455	14 848	3 296	3 086	2 999	9 381	2 897	3 252			

EMIS

Table 4: Number of learners in ordinary schools, by province, sector, gender and grade, in 2013 (concluded)

Province	Sector	Gender	FET Band				Other ¹⁾	Total Primary (Gr.1-7)	Total Secondary (Gr.8-12)	Total (Gr.1-12)	Grant Total
			Gr. 10	Gr. 11	Gr. 12	Total					
Eastern Cape	Independent	Female	1 891	1 963	2 247	6 101	234	15 419	9 606	25 025	28 379
		Total	3 661	3 601	4 052	11 314	547	31 373	18 288	49 661	56 473
	Public	Female	79 397	65 889	41 269	186 555	223	525 775	325 093	850 868	928 238
		Total	151 259	118 879	73 887	344 025	663	1 101 847	622 532	1 724 379	1 881 605
	Both	Female	81 288	67 852	43 516	192 656	457	541 194	334 699	875 893	956 617
		Male	73 632	54 628	34 423	162 683	753	592 026	306 121	898 147	981 461
		Total	154 920	122 480	77 939	355 339	1 210	1 133 220	640 820	1 774 040	1 938 078
Free State	Independent	Female	608	513	528	1 649	0	3 933	2 854	6 787	7 363
		Total	1 154	928	915	2 997	0	8 157	5 414	13 571	14 702
	Public	Female	31 570	19 784	14 456	65 810	51	184 486	121 350	305 836	321 797
		Total	59 489	36 611	26 859	122 959	136	380 317	237 118	617 435	649 806
	Both	Female	32 178	20 297	14 984	67 459	51	188 419	124 204	312 623	329 160
		Male	28 465	17 242	12 790	58 497	85	200 055	118 328	318 383	335 348
		Total	60 643	37 539	27 774	125 956	136	388 474	242 532	631 006	664 508
Gauteng	Independent	Female	9 175	8 926	8 517	26 618	316	62 224	43 891	106 115	116 821
		Total	17 982	17 009	15 671	50 662	655	124 402	83 884	208 286	229 984
	Public	Female	93 315	65 316	49 474	208 105	1 528	546 368	354 581	900 949	950 583
		Total	183 359	119 594	89 364	392 317	4 623	1 107 781	690 538	1 798 319	1 899 542
	Both	Female	102 490	74 242	57 991	234 723	1 844	608 592	398 472	1 007 064	1 067 404
		Male	98 851	62 361	47 044	208 256	3 434	623 591	375 950	999 541	1 062 122
		Total	201 341	136 603	105 035	442 979	5 278	1 232 183	774 422	2 006 605	2 129 526
KwaZulu-Natal	Independent	Female	2 835	2 995	4 765	10 595	165	15 564	15 955	31 519	35 219
		Total	5 228	5 631	8 808	19 667	299	30 458	29 721	60 179	67 595
	Public	Female	131 300	115 998	82 057	329 355	141	737 668	547 059	1 284 727	1 378 548
		Total	263 239	218 013	148 492	629 744	393	1 531 537	1 077 579	2 609 116	2 798 975
	Both	Female	134 135	118 993	86 822	339 950	306	753 232	563 014	1 316 246	1 413 767
		Male	134 332	104 651	70 478	309 461	386	808 763	544 286	1 353 049	1 452 803
		Total	268 467	223 644	157 300	649 411	692	1 561 995	1 107 300	2 669 295	2 866 570
Limpopo	Independent	Female	2 404	2 056	2 143	6 603	15	13 987	10 847	24 834	27 179
		Total	4 563	3 664	3 790	12 017	38	27 814	20 215	48 029	52 726
	Public	Female	94 629	65 883	44 585	205 097	38	413 218	346 506	759 724	817 683
		Total	183 241	119 841	82 860	385 942	89	858 015	687 496	1 545 511	1 662 106
	Both	Female	97 033	67 939	46 728	211 700	53	427 205	357 353	784 558	844 862
		Male	90 771	55 566	39 922	186 259	74	458 624	350 358	808 982	869 970
		Total	187 804	123 505	86 650	397 959	127	885 829	707 711	1 593 540	1 714 832
Mpumalanga	Independent	Female	848	970	1 676	3 494	47	7 261	5 002	12 263	13 577
		Total	1 702	1 872	3 039	6 613	83	14 610	9 687	24 297	26 948
	Public	Female	49 823	39 133	26 625	115 581	132	279 019	199 546	478 565	507 567
		Total	95 415	72 519	49 282	217 216	348	580 216	387 077	967 293	1 025 859
	Both	Female	50 671	40 103	28 301	119 075	179	286 280	204 548	490 828	521 144
		Male	46 446	34 288	24 020	104 754	252	308 546	192 216	500 762	531 663
		Total	97 117	74 391	52 321	223 829	431	594 826	396 764	991 590	1 052 807
Northern Cape	Independent	Female	198	184	155	537	3	608	941	1 549	1 761
		Total	352	279	251	882	5	1 240	1 513	2 753	3 186
	Public	Female	11 623	8 101	5 656	25 380	0	82 165	47 526	129 691	138 334
		Total	22 375	15 097	10 403	47 875	0	169 412	92 496	261 908	279 445
	Both	Female	11 821	8 285	5 811	25 917	3	82 773	48 467	131 240	140 095
		Male	10 906	7 091	4 843	22 840	2	87 879	45 542	133 421	142 536
		Total	22 727	15 376	10 654	48 757	5	170 652	94 009	264 661	282 631
North West	Independent	Female	519	428	406	1 353	2	4 513	2 387	6 900	7 717
		Total	981	845	754	2 580	14	9 011	4 614	13 625	15 221
	Public	Female	35 692	22 327	16 231	74 250	34	224 025	135 404	359 429	382 844
		Total	69 051	41 062	29 225	139 338	106	461 803	264 178	725 981	773 040
	Both	Female	36 211	22 755	16 637	75 603	36	228 538	137 791	366 329	390 561
		Male	33 821	19 152	13 342	66 315	84	242 276	131 001	373 277	397 700
		Total	70 032	41 907	29 979	141 918	120	470 814	268 792	739 606	788 261
Western Cape	Independent	Female	1 910	1 732	1 755	5 397	47	11 929	8 813	20 742	23 724
		Total	3 749	3 478	3 471	10 698	107	23 759	17 375	41 134	46 969
	Public	Female	43 821	31 300	26 241	101 362	575	296 476	184 869	481 345	511 191
		Total	79 485	55 688	46 073	181 246	1 465	602 097	343 772	945 869	1 005 466
	Both	Female	45 731	33 032	27 996	106 759	622	308 405	193 682	502 087	534 915
		Male	37 503	26 134	21 548	85 185	950	317 451	167 465	484 916	517 520
		Total	83 234	59 166	49 544	191 944	1 572	625 856	361 147	987 003	1 052 435
South Africa	Independent	Female	20 388	19 767	22 192	62 347	829	135 438	100 296	235 734	261 740
		Male	18 984	17 540	18 559	55 083	919	135 386	90 415	225 801	252 064
		Total	39 372	37 307	40 751	117 430	1 748	270 824	190 711	461 535	513 804
	Public	Female	571 170	433 731	306 594	1 311 495	2 722	3 289 200	2 261 934	5 551 134	5 936 785
		Male	535 743	363 573	249 851	1 149 167	5 101	3 503 825	2 140 852	5 644 677	6 039 059
		Total	1 106 913	797 304	556 445	2 460 662	7 823	6 793 025	4 402 786	11 195 811	11 975 844
	Both	Female	591 558	453 498	328 786	1 373 842	3 551	3 424 638	2 362 230	5 786 868	6 198 525
		Male	554 727	381 113	268 410	1 204 250	6 020	3 639 211	2 231 267	5 870 478	6 291 123
		Total	1 146 285	834 611	597 196	2 578 092	9 571	7 063 849	4 593 497	11 657 346	12 489 648

Note 1: Data exclude learners at stand-alone ECD sites and special schools.

Note 2: Owing to a shortage of space in the table, the male enrolment figures for ordinary public and independent schools are intentionally omitted in the provincial data, but are included in the national data.

1) Learners not grouped in any of the grades provided.

Figure 1: Percentage distribution of learners in ordinary schools, by phase, in 2013

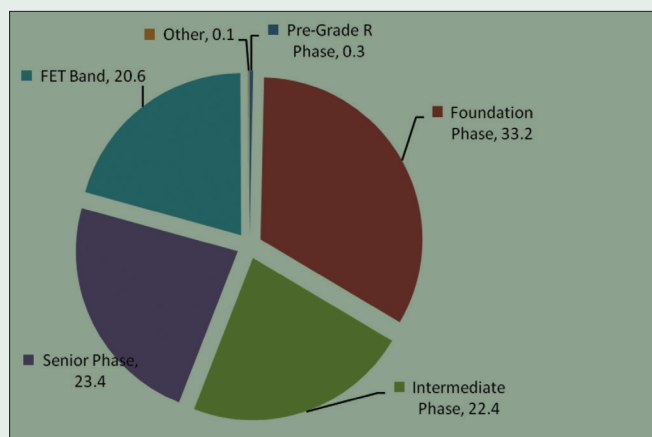


Figure 1 reveals that the highest proportion of learners in ordinary schools nationally was located in the foundation phase (33.2%) followed by the intermediate phase and the senior phase with 22.4% and 23.4% respectively.

Figure 2: Percentage distribution of female learners in ordinary schools, by grade, in 2013

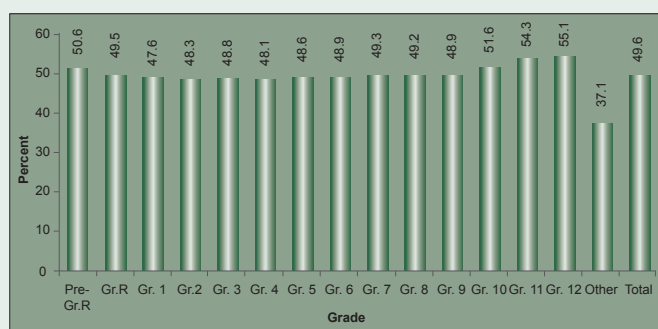


Figure 2 shows that, in the schooling system, there were more male than female (49.6%) learners. The lowest percentage of female learners in ordinary schools nationally was in Grade 1 (47.6%) and the highest percentage was in Grades 11 and 12 (54.3 and 55.1% respectively).

Figure 3: Percentage distribution of learners in ordinary schools, by grade, in 2013

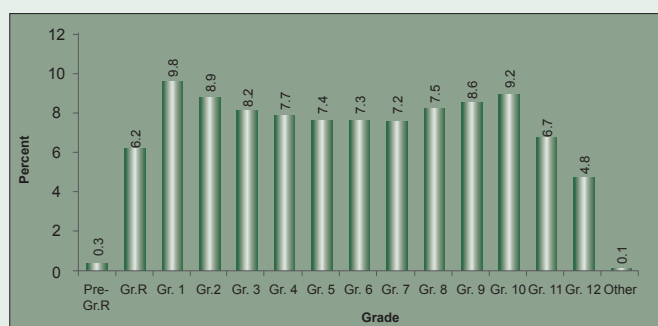


Figure 3 indicates that enrolment is generally very high in Grade 1 (9.8%) and declines as learners move to higher grades within the schooling system with 4.8% in Grade 12.

Table 5 reflects the following indicators:

- (a) When counting all educators, the LER for ordinary public schools nationally was 30.6, while, when counting only state-paid educators in these schools, the LER increased to 32.6.
- (b) The LSR for ordinary public schools nationally was 496, with three provinces (Gauteng, Mpumalanga and the Western Cape) higher than the national average.

Table 5: Indicators for ordinary PUBLIC schools, by province, in 2013

Province	LER		LSR	ESR
	State-paid and SGB-paid Educators	State-paid Educators ¹⁾		
Eastern Cape	29.8	31.7	338	11.4
Free-State	27.4	29.1	490	17.9
Gauteng	32.0	35.6	924	28.9
KwaZulu-Natal	30.7	32.2	471	15.4
Limpopo	30.4	30.8	424	13.9
Mpumalanga	30.7	31.7	580	18.9
Northern Cape	32.0	34.3	505	15.8
North West	30.7	32.6	498	16.2
Western Cape	31.1	37.3	690	22.2
South Africa	30.6	32.6	496	16.2

1) Underlying data not shown in publication.

(c) The ESR for ordinary public schools nationally was 16.2, with four provinces (the Free State, Gauteng, Mpumalanga and the Western Cape) higher than the national average.

Figure 4: Frequency distribution of learners in ordinary PUBLIC schools in 2013

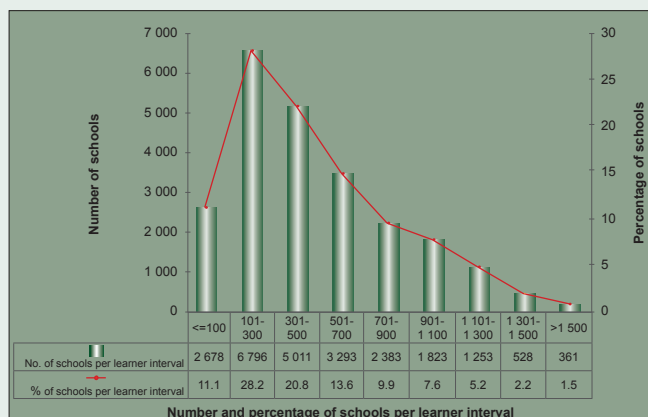


Figure 4, a histogram, shows that the highest number of ordinary public schools nationally (6 796, or 28.2%) was in the 101 to 300 learner interval. Furthermore, there were 2 678 schools (11.1%) and 361 schools (1.5%) in, respectively, the 100 and below learner interval and the above 1 500 learner interval.

Figure 5: Frequency distribution of LER in ordinary PUBLIC schools in 2013

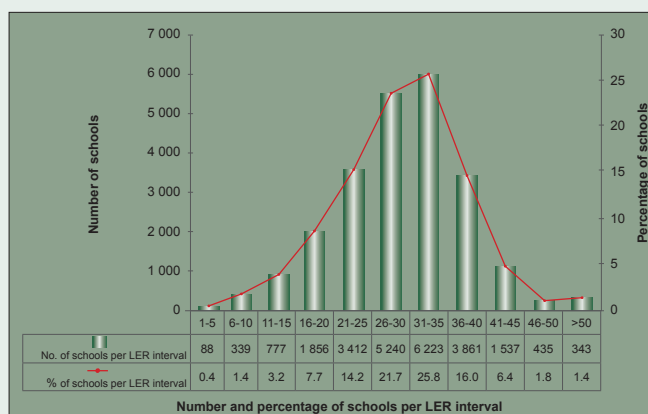


Figure 5, a histogram, reflects that the highest number of ordinary public schools nationally (6 223, or 25.8%) was in the 31 to 35 LER interval. Furthermore, there were 88 schools (0.4%) and 343 schools (1.4%) in, respectively, the one to five LER interval and the above 50 LER interval.