



# **Labour force survey September 2000 to March 2005**

## **Historical series of revised estimates**

**Embargoed until  
26 September 2005  
11:30**

Published by Statistics South Africa, Private Bag X44, Pretoria 0001

© Statistics South Africa, 2005

Users may apply or process this data, provided Statistics South Africa (Stats SA) is acknowledged as the original source of the data; that it is specified that the application and/or analysis is the result of the user's independent processing of the data; and that neither the basic data nor any reprocessed version or application thereof may be sold or offered for sale in any form whatsoever without prior permission from Stats SA.

Stats SA Library Cataloguing-in-Publication (CIP) Data

**Labour Force Survey, September 2000 to March 2005: Historical series of revised estimates**

Statistics South Africa. Pretoria: Statistics South Africa, 2001

1. Labour supply – Statistics
2. Labour supply (South Africa)
3. Unemployment (South Africa)
4. Informal sector (Economics) – South Africa
5. Formal sector (Economics) – South Africa
- I. Statistics South Africa
- II. Series  
(LCSH 16)

A complete set of Stats SA publications is available at Stats SA Library and the following libraries:

- National Library of South Africa, Pretoria Division
- National Library of South Africa, Cape Town Division
- Library of Parliament, Cape Town
- Bloemfontein Public Library
- Natal Society Library, Pietermaritzburg
- Johannesburg Public Library
- Eastern Cape Library Services, King William's Town
- Central Regional Library, Polokwane
- Central Reference Library, Nelspruit
- Central Reference Collection, Kimberley
- Central Reference Library, Mmabatho

This publication is available on the Stats SA website [www.statssa.gov.za](http://www.statssa.gov.za).

The data and metadata set from the *Labour force survey September 2000 to March 2005: Historical series of revised estimates* will be available on CD-ROM. A charge may be made according to the pricing policy, which can be seen on the website.

Stats SA also provides a subscription service.

**Enquiries:**

	<b>Printing and distribution</b>	<b>User information services</b>
tel:	(012) 310 8251	(012) 310 8600
fax:	(012) 321 7381	(012) 310 8500/ 8495
email:	<a href="mailto:distribution@statssa.gov.za">distribution@statssa.gov.za</a>	<a href="mailto:info@statssa.gov.za">info@statssa.gov.za</a>

## Contents

<b>1.</b>	<b>Introduction</b>	i
<b>2.</b>	<b>The labour market, September 2000 to March 2005</b>	i
2.1	The working-age population	i
2.2	Labour market measures	ii
<b>3.</b>	<b>Unemployment patterns</b>	iii
3.1	Official unemployment by sex	iii
3.2	Discouraged work-seekers	iv
<b>4.</b>	<b>Employment patterns</b>	v
4.1	Employment by occupation	v
4.2	Employment by industry	vi
4.3	Employment by sector	viii

## Tables

<b>1.</b>	<b>Labour market indicators (working-age population, 15–65 years)</b>	
1.1	Official definition of unemployment, by sex	1
1.2	Expanded definition of unemployment, by sex	3
<b>2.</b>	<b>Population of working age (15–65 years)</b>	
2.1	By sex and province	5
2.2	By sex and population group	6
<b>3.</b>	<b>The economically active aged 15–65 years</b>	
3.1	By sex and province	7
3.2	By sex and population group	8
<b>4.</b>	<b>Workers (employers, employees and self-employed) aged 15–65 years</b>	
4.1	By sex and province	9
4.2	By sex and population group	10
4.3	By sex and occupation	11
4.4	By sector and main industry	
4.4.1	Both sexes	13
4.4.2	Male	14
4.4.3	Female	15
<b>5.</b>	<b>The unemployed aged 15–65 years</b>	
5.1	By sex and province, (official definition of unemployment)	16
5.2	By sex and population group, (official definition of unemployment)	17
<b>6.</b>	<b>The not economically active aged 15–65 years</b>	
6.1	By sex and province	18
6.2	By sex and population group	19
<b>7.</b>	<b>Official unemployment rates (population aged 15–65 years)</b>	
7.1	By sex and province	20
7.2	By sex and population group	21
<b>8</b>	<b>Labour force participation rates (population aged 15–65 years)</b>	
8.1	By sex and province	22
8.2	By sex and population group	23
<b>9</b>	<b>Labour absorption rates (population aged 15–65 years)</b>	
9.1	By sex and province	24
9.2	By sex and population group	25

**List of figures**

Figure 1	The working-age population	i
Figure 2	Components of the working-age population (official definition of unemployment)	ii
Figure 3	Unemployment rates by sex (official definition of unemployment)	iii
Figure 4	Discouraged work-seekers as a percentage of the working-age population	iv
Figure 5	Percentage of persons in 'more skilled' occupations by sex	v
Figure 6	Percentage of persons employed in the agriculture, mining and manufacturing industries	vi
Figure 7	Percentage of persons employed in selected industries	vii
Figure 8	Employment in the formal and informal sectors	viii

## LABOUR FORCE SURVEY, SEPTEMBER 2000 TO MARCH 2005: HISTORICAL SERIES OF REVISED ESTIMATES

**This report presents a selection of key labour market indicators based on revised LFS (Labour Force Survey) estimates**

### 1 Introduction

Statistics South Africa has updated the entire series of LFS results to reflect the new population estimates released in February 2005. Until now, only the two most recent rounds of the LFS (released in March and June this year) reflected these new estimates. In addition, all rounds of the series have now been benchmarked to Census 2001, including the early rounds that were previously benchmarked to Census '96. The resulting estimates are now comparable for the entire series to date.

In view of the sample size, caution must be exercised when interpreting LFS data at geographic levels lower than province.

A table showing a comparison of old and new key indicators will be published at a later stage.

### 2 The labour market, September 2000 to March 2005

#### 2.1 The working-age population

**Figure 1: The working-age population**

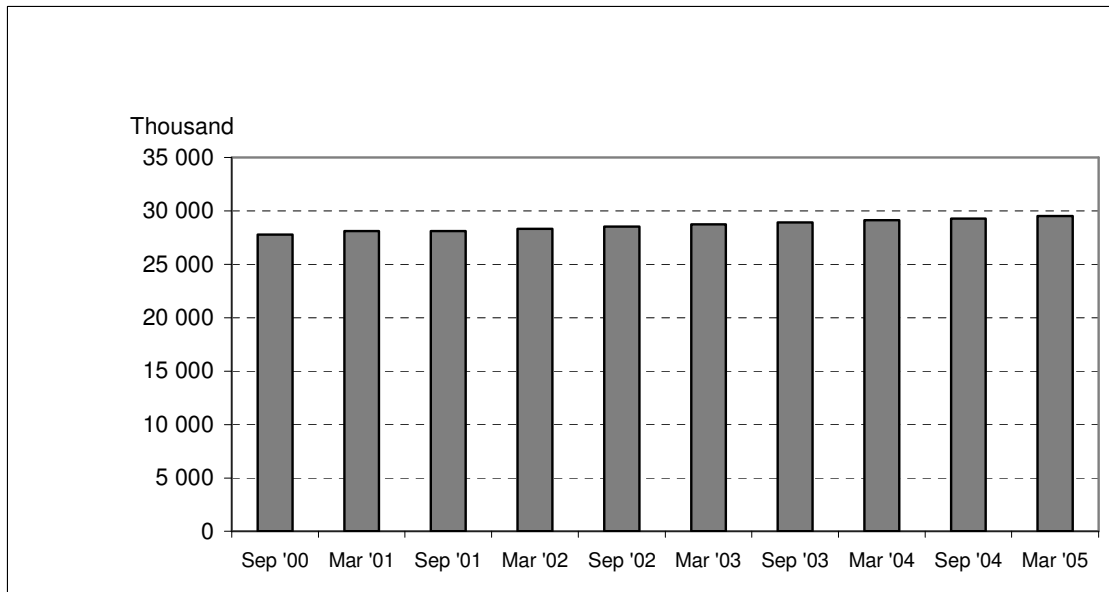


Figure 1 and Table 1 (pp. 1-4) show a steady increase in the working-age population (all persons aged 15-65 years) since the inception of the LFS programme in September 2000.

In September 2000, the working-age population totalled 27,8 million persons. By March 2005 this total had risen to 29,5 million persons.

## 2.2 Labour market measures

**Figure 2: Components of the working-age population (official definition of unemployment)**

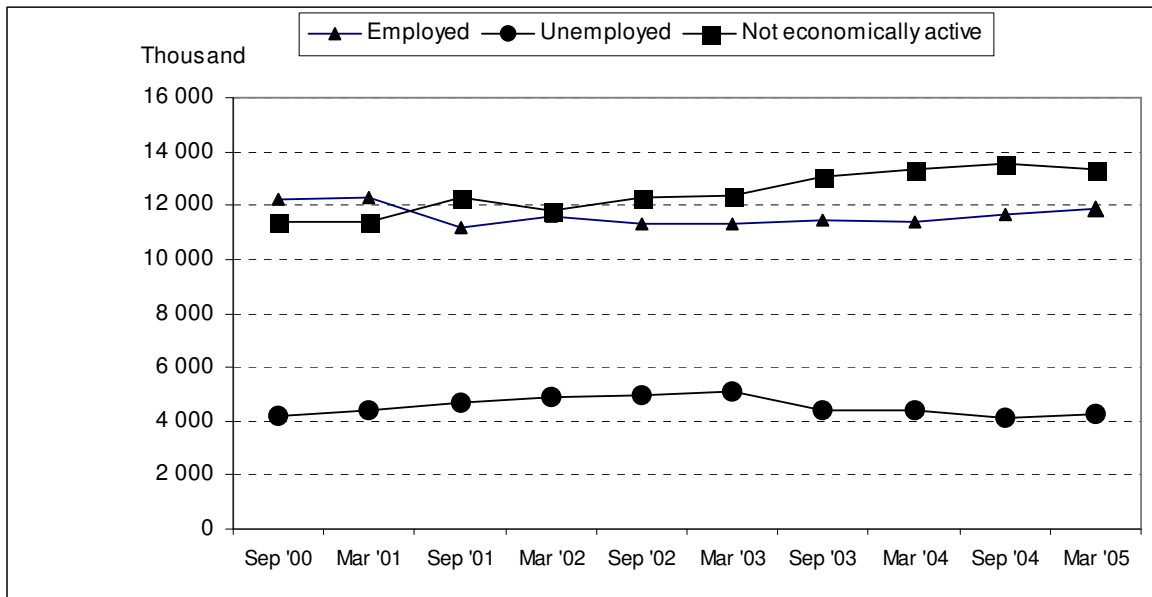


Figure 2 and Table 1 show the trend in the number of persons in each of the three components of the working-age population over the period September 2000 to March 2005.

- The number of employed persons was 12,2 million in September 2000. This was followed by a decline to 11,2 million in September 2001, after which employment levels rose in virtually every period to 11,9 million by March 2005.
- The number of unemployed persons rose steadily from 4,2 million in September 2000, to a peak of 5,1 million in March 2003, before declining to 4,3 million in March 2005.
- The number of not economically active persons was lowest at the beginning of the period (11,4 million in September 2000 and March 2001) rising to over 13 million from September 2003 to March 2005.

### 3 Unemployment patterns

#### 3.1 Official unemployment by sex

Figure 3: Unemployment rates by gender (official definition of unemployment)

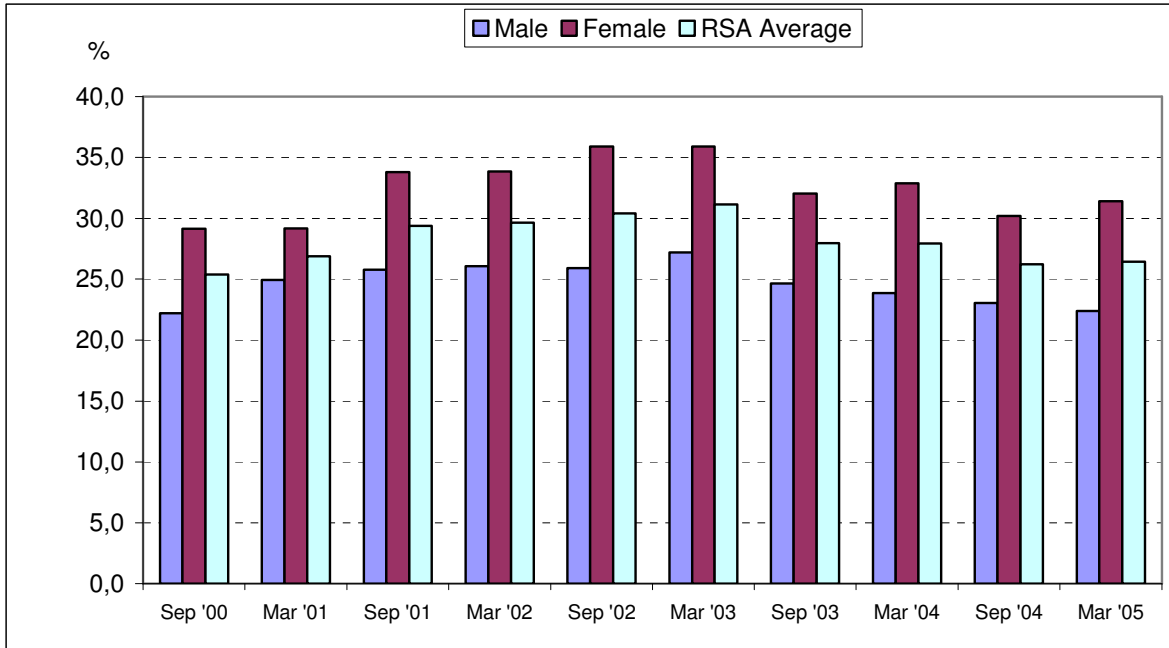


Figure 3 shows the trend in unemployment rates over the period September 2000 to March 2005. In this respect, the notable features of Figure 3 and Table 1 are as follows:

- There are marked gender differences in unemployment rates. For example, in September 2000, the unemployment rate among men was 22,2% whereas among women it was 29,2%. The gap between male and female unemployment rates was largest in September 2002 (10,0 percentage points) and smallest in March 2001 (4,1 percentage points).
- The overall unemployment rate (RSA average) rose from 25,4% in September 2000 to a peak of 31,2% in March 2003, before declining to 26,5% in March 2005.
- The official unemployment rate shows a stable curvilinear pattern over time.

### 3.2 Discouraged work-seekers

**Figure 4: Discouraged work-seekers as a percentage of the working-age population**

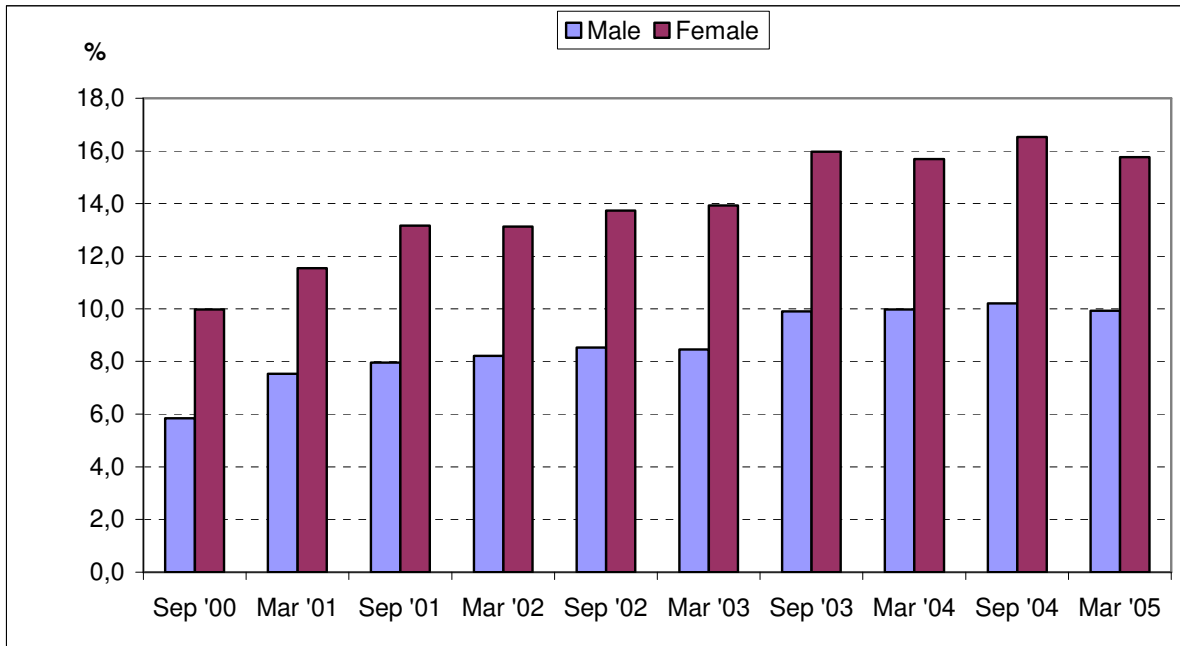


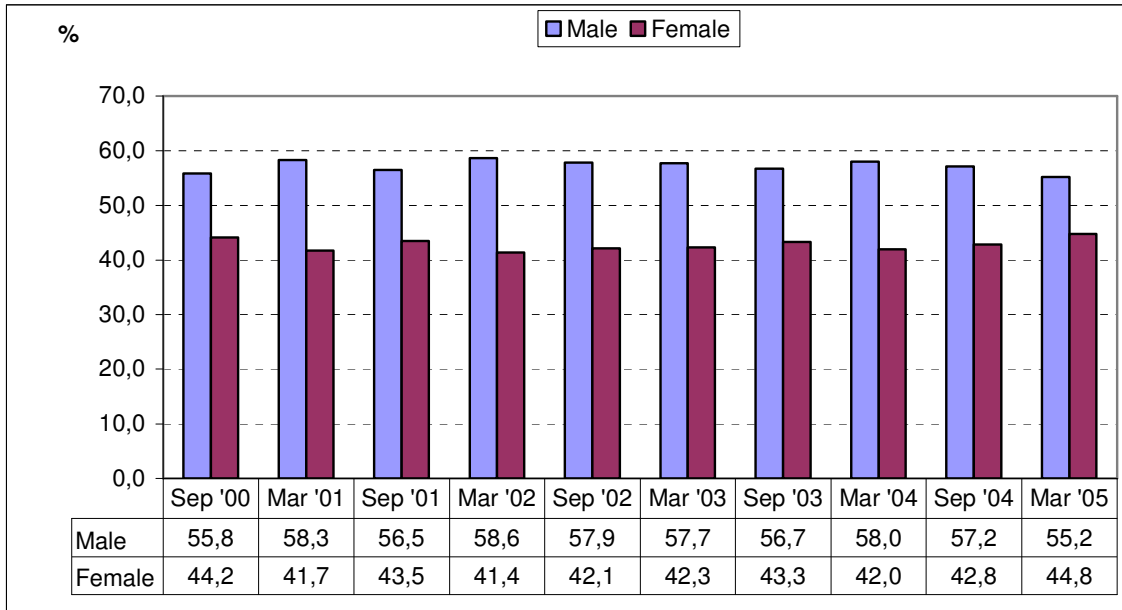
Figure 4 and Table 1.2 show that discouraged work-seekers are predominantly female. For example in September 2000, 5,8% of working-age men were discouraged work-seekers as against 10,0% of working-age women. By March 2005, the percentages of both groups had risen – to 9,9% of working-age men and 15,8% of working-age women.



## 4 Employment patterns

### 4.1 Employment by occupation

**Figure 5: Percentage of persons employed in 'more skilled' occupations by sex**



In Figure 5, persons employed in the three highest occupation categories are added together to make a single group regarded as 'more skilled'. This group includes managers and senior officials, professionals/non-professionals and technicians. In September 2000 there were 2,3 million persons in 'more skilled' occupations – rising to 2,5 million in March 2005. Of these 'more skilled' personnel, and as indicated in Figure 5:

- In each period the percentage of men occupying such positions is somewhat higher than the percentage of women. For example, in September 2000, 55,8% of people in 'more skilled' occupations were men as against 44,2% of women.
- By March 2005, the gender gap had narrowed slightly – 55,2% of men in the 'more skilled' occupation category as against 44,8% of women.

## 4.2 Employment by industry

**Figure 6: Percentage of persons employed in the agriculture, mining and manufacturing industries**

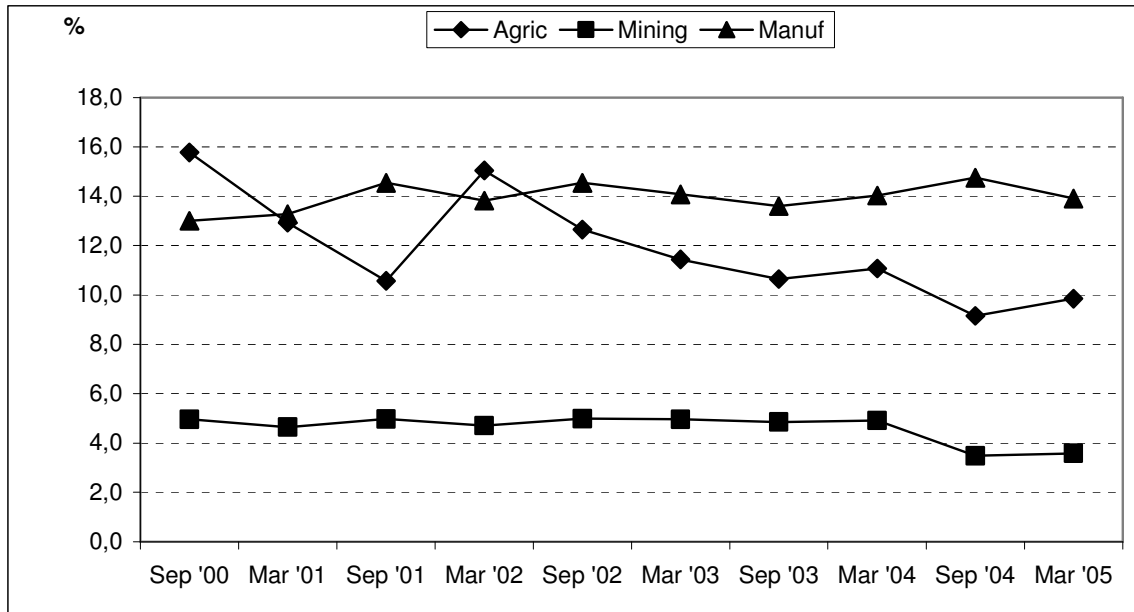


Figure 6 shows interesting trends in employment over the period September 2000 to March 2005, in agriculture, mining and manufacturing.

- Agricultural employment has been subject to large fluctuations as a result of drought. In September 2000 as many as 15,8% of all employed persons worked in agriculture, as against less than 10% in the most recent periods (September 2004 and March 2005).
- Employment in the mining sector reached 5% of total employment in September 2001, September 2003 and March 2003 before declining to 3,6% of total employment in March 2005.
- The percentage of persons employed in manufacturing has fluctuated between 13% and 15% over the period.

**Figure 7: Percentage of persons employed in selected industries**

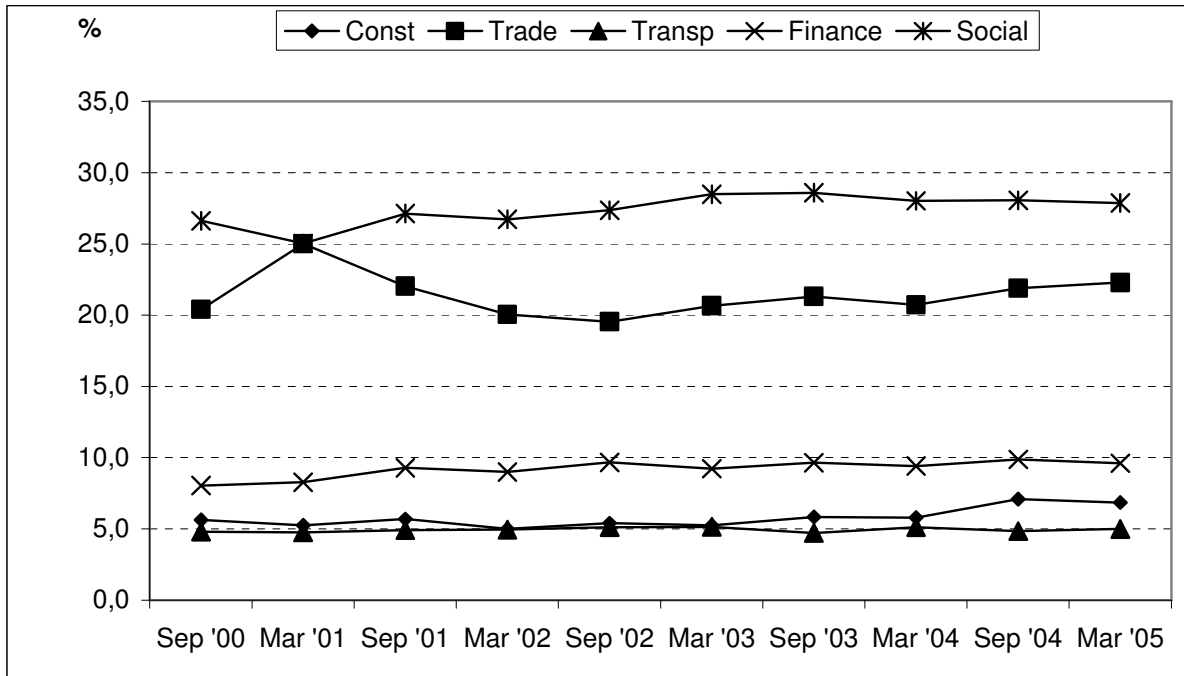


Figure 7 highlights the importance of other industries in terms of the percentage of the employed working in each.

- Social and community services account for the largest share of total employment (over 25% of total employment in virtually every period) since September 2000.
- The trade sector makes the second largest contribution to employment, accounting for around 20% of total employment since September 2000. Employment in the finance sector accounts for 8–10% of total employment.
- And the percentages of persons employed in the transport and the construction industries are similar at 5–7%.

### 4.3 Employment by sector

**Figure 8: Employment in the formal and informal sectors**

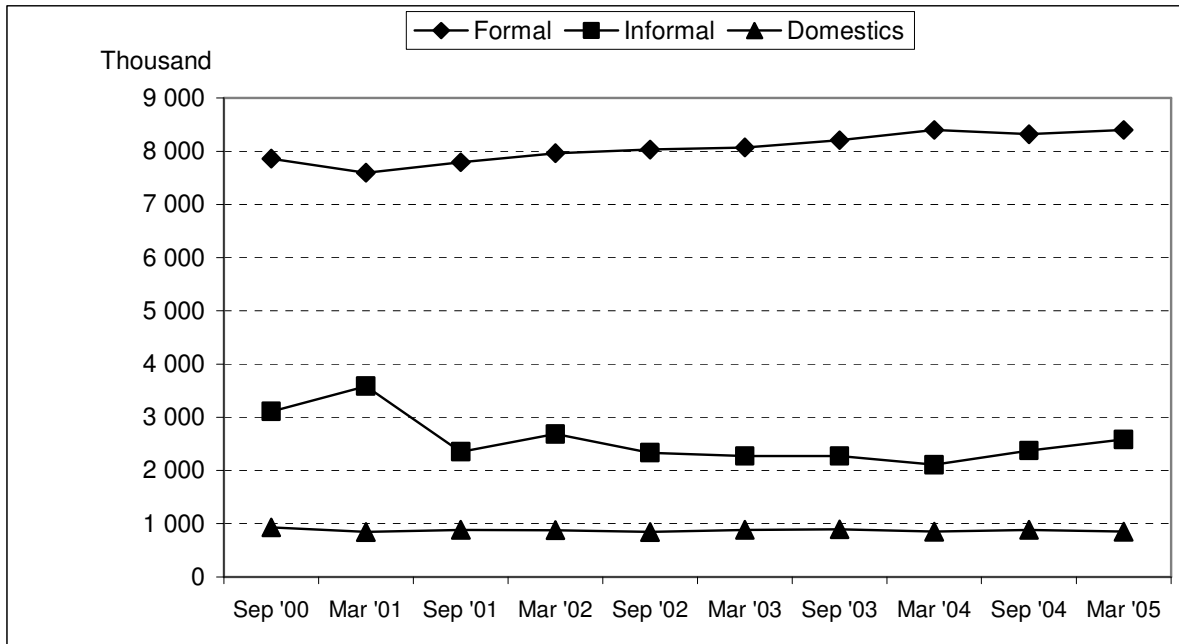


Figure 8 and Table 4.4 show that over the period September 2000 to March 2005:

- The trend in formal sector employment (including agriculture) has been generally upward. As a result, employment levels in the formal sector rose from 7,9 million in September 2000 to 8,4 million by March 2005. That is, the number of people working in the formal sector shows stability and consistent change over time.
- After declining from over 3,0 million in the early part of the decade (September 2000 and March 2001), employment in the informal sector remained in the two to three million range over the rest of the period to March 2005.
- The number of people working in the informal sector tends to be volatile over time. This could be, at least in part, a reflection of the instability of the sector as a whole, with ease of movement into and out of it. On the other hand, some of the variation could be explained by:
  - Proxy responses
  - Different understanding of the concept of informal work by the respondents, even though Stats SA trains fieldworkers to identify and probe for informal work
  - Language and translation difficulties.

**PJ Lehohla**  
 Statistician-General: Statistics South Africa

**1. Labour market indicators (working-age population, 15–65 years)**

**1.1 Official definition of unemployment, by sex**

Labour market indicator	Sep 2000	Mar 2001	Sep 2001	Mar 2002	Sep 2002	Mar 2003	Sep 2003	Mar 2004	Sep 2004	Mar 2005
	<b>Thousands</b>									
<b>Employed (a)</b>										
Male	6 943	6 788	6 442	6 606	6 614	6 520	6 613	6 640	6 772	6 911
Female	5 295	5 485	4 739	5 011	4 678	4 782	4 810	4 752	4 866	4 991
<b>Total</b>	<b>12 238</b>	<b>12 275</b>	<b>11 181</b>	<b>11 617</b>	<b>11 296</b>	<b>11 304</b>	<b>11 424</b>	<b>11 392</b>	<b>11 643</b>	<b>11 907</b>
<b>Unemployed (b)</b>										
Male	1 983	2 211	2 236	2 331	2 316	2 438	2 166	2 081	2 029	1 997
Female	2 179	2 202	2 420	2 566	2 619	2 677	2 268	2 330	2 103	2 285
<b>Total</b>	<b>4 162</b>	<b>4 413</b>	<b>4 655</b>	<b>4 897</b>	<b>4 936</b>	<b>5 116</b>	<b>4 434</b>	<b>4 415</b>	<b>4 135</b>	<b>4 283</b>
<b>Not economically active (c)</b>										
Male	4 548	4 659	4 937	4 760	4 972	5 017	5 218	5 356	5 394	5 335
Female	6 856	6 747	7 344	7 057	7 318	7 319	7 862	7 963	8 128	7 988
<b>Total</b>	<b>11 407</b>	<b>11 408</b>	<b>12 281</b>	<b>11 819</b>	<b>12 295</b>	<b>12 337</b>	<b>13 080</b>	<b>13 324</b>	<b>13 527</b>	<b>13 334</b>
<b>Labour force (a+b)</b>										
Male	8 926	8 998	8 677	8 937	8 930	8 958	8 779	8 721	8 800	8 908
Female	7 474	7 687	7 158	7 577	7 297	7 459	7 079	7 082	6 969	7 276
<b>Total</b>	<b>16 400</b>	<b>16 688</b>	<b>15 836</b>	<b>16 514</b>	<b>16 232</b>	<b>16 420</b>	<b>15 858</b>	<b>15 807</b>	<b>15 778</b>	<b>16 190</b>
<b>Working age (a+b+c)</b>										
Male	13 474	13 657	13 615	13 697	13 903	13 975	13 997	14 077	14 194	14 243
Female	14 329	14 435	14 503	14 634	14 615	14 778	14 941	15 045	15 097	15 263
<b>Total</b>	<b>27 807</b>	<b>28 096</b>	<b>28 117</b>	<b>28 333</b>	<b>28 527</b>	<b>28 756</b>	<b>28 938</b>	<b>29 131</b>	<b>29 305</b>	<b>29 524</b>

**1. Labour market indicators (working-age population, 15–65 years)**

**1.1 Official definition of unemployment, by sex (concluded)**

Labour market indicator	Sep 2000	Mar 2001	Sep 2001	Mar 2002	Sep 2002	Mar 2003	Sep 2003	Mar 2004	Sep 2004	Mar 2005
	%									
<b>Unemployment rate</b>										
Male	22,2	24,6	25,8	26,1	25,9	27,2	24,7	23,9	23,1	22,4
Female	29,2	28,6	33,8	33,9	35,9	35,9	32,0	32,9	30,2	31,4
<b>Total</b>	<b>25,4</b>	<b>26,4</b>	<b>29,4</b>	<b>29,7</b>	<b>30,4</b>	<b>31,2</b>	<b>28,0</b>	<b>27,9</b>	<b>26,2</b>	<b>26,5</b>
<b>Absorption rate</b>										
Male	51,5	49,7	47,3	48,2	47,6	46,7	47,2	47,2	47,7	48,5
Female	37,0	38,0	32,7	34,2	32,0	32,4	32,2	31,6	32,2	32,7
<b>Total</b>	<b>44,0</b>	<b>43,7</b>	<b>39,8</b>	<b>41,0</b>	<b>39,6</b>	<b>39,3</b>	<b>39,5</b>	<b>39,1</b>	<b>39,7</b>	<b>40,3</b>
<b>Participation rate</b>										
Male	66,2	65,9	63,7	65,2	64,2	64,1	62,7	62,0	62,0	62,5
Female	52,2	53,3	49,4	51,8	49,9	50,5	47,4	47,1	46,2	47,7
<b>Total</b>	<b>59,0</b>	<b>59,4</b>	<b>56,3</b>	<b>58,3</b>	<b>56,9</b>	<b>57,1</b>	<b>54,8</b>	<b>54,3</b>	<b>53,8</b>	<b>54,8</b>

Totals include unspecified sex.

Due to rounding, numbers do not necessarily add up to totals.

**1. Labour market indicators (working-age population, 15–65 years)**

**1.2 Expanded definition of unemployment, by sex**

Labour market indicator	Sep 2000	Mar 2001	Sep 2001	Mar 2002	Sep 2002	Mar 2003	Sep 2003	Mar 2004	Sep 2004	Mar 2005
	<b>Thousands</b>									
<b>Employed (a)</b>										
Male	6 943	6 788	6 442	6 606	6 614	6 520	6 613	6 640	6 772	6 911
Female	5 295	5 485	4 739	5 011	4 678	4 782	4 810	4 752	4 866	4 991
<b>Total</b>	<b>12 238</b>	<b>12 275</b>	<b>11 181</b>	<b>11 617</b>	<b>11 296</b>	<b>11 304</b>	<b>11 424</b>	<b>11 392</b>	<b>11 643</b>	<b>11 907</b>
<b>Unemployed (incl. discouraged work-seekers) (b)</b>										
Male	2 771	3 240	3 320	3 456	3 501	3 620	3 552	3 486	3 478	3 411
Female	3 607	3 868	4 330	4 486	4 627	4 736	4 655	4 690	4 600	4 691
<b>Total</b>	<b>6 379</b>	<b>7 110</b>	<b>7 649</b>	<b>7 942</b>	<b>8 130</b>	<b>8 357</b>	<b>8 208</b>	<b>8 180</b>	<b>8 083</b>	<b>8 107</b>
<b>Not economically active (excl. discouraged work-seekers) (c)</b>										
Male	3 761	3 629	3 853	3 636	3 787	3 835	3 832	3 951	3 944	3 921
Female	5 427	5 081	5 434	5 137	5 310	5 260	5 476	5 604	5 631	5 581
<b>Total</b>	<b>9 189</b>	<b>8 711</b>	<b>9 287</b>	<b>8 774</b>	<b>9 101</b>	<b>9 096</b>	<b>9 307</b>	<b>9 559</b>	<b>9 578</b>	<b>9 510</b>
<b>Labour force (incl. discouraged work-seekers) (a+b)</b>										
Male	9 714	10 028	9 761	10 062	10 116	10 140	10 166	10 126	10 250	10 322
Female	8 902	9 354	9 069	9 497	9 306	9 518	9 465	9 442	9 466	9 682
<b>Total</b>	<b>18 618</b>	<b>19 384</b>	<b>18 830</b>	<b>19 559</b>	<b>19 426</b>	<b>19 661</b>	<b>19 631</b>	<b>19 572</b>	<b>19 726</b>	<b>20 014</b>
<b>Working age (a+b+c)</b>										
Male	13 474	13 657	13 615	13 697	13 903	13 975	13 997	14 077	14 194	14 243
Female	14 329	14 435	14 503	14 634	14 615	14 778	14 941	15 045	15 097	15 263
<b>Total</b>	<b>27 807</b>	<b>28 096</b>	<b>28 117</b>	<b>28 333</b>	<b>28 527</b>	<b>28 756</b>	<b>28 938</b>	<b>29 131</b>	<b>29 305</b>	<b>29 524</b>

**1. Labour market indicators (working-age population, 15–65 years)**

**1.2 Expanded definition of unemployment, by sex (concluded)**

Labour market indicator	Sep 2000	Mar 2001	Sep 2001	Mar 2002	Sep 2002	Mar 2003	Sep 2003	Mar 2004	Sep 2004	Mar 2005
	%									
<b>Unemployment rate</b>										
Male	28,5	32,3	34,0	34,3	34,6	35,7	34,9	34,4	33,9	33,0
Female	40,5	41,4	47,7	47,2	49,7	49,8	49,2	49,7	48,6	48,5
<b>Total</b>	<b>34,3</b>	<b>36,7</b>	<b>40,6</b>	<b>40,6</b>	<b>41,8</b>	<b>42,5</b>	<b>41,8</b>	<b>41,8</b>	<b>41,0</b>	<b>40,5</b>
<b>Absorption rate</b>										
Male	51,5	49,7	47,3	48,2	47,6	46,7	47,2	47,2	47,7	48,5
Female	37,0	38,0	32,7	34,2	32,0	32,4	32,2	31,6	32,2	32,7
<b>Total</b>	<b>44,0</b>	<b>43,7</b>	<b>39,8</b>	<b>41,0</b>	<b>39,6</b>	<b>39,3</b>	<b>39,5</b>	<b>39,1</b>	<b>39,7</b>	<b>40,3</b>
<b>Participation rate</b>										
Male	72,1	73,4	71,7	73,5	72,8	72,6	72,6	71,9	72,2	72,5
Female	62,1	64,8	62,5	64,9	63,7	64,4	63,4	62,8	62,7	63,4
<b>Total</b>	<b>67,0</b>	<b>69,0</b>	<b>67,0</b>	<b>69,0</b>	<b>68,1</b>	<b>68,4</b>	<b>67,8</b>	<b>67,2</b>	<b>67,3</b>	<b>67,8</b>
<b>Discouraged work-seekers (thousands)</b>										
Male	788	1 030	1 084	1 125	1 185	1 182	1 387	1 405	1 449	1 414
Female	1 429	1 667	1 910	1 920	2 008	2 058	2 387	2 360	2 497	2 406
<b>Total</b>	<b>2 218</b>	<b>2 696</b>	<b>2 994</b>	<b>3 045</b>	<b>3 194</b>	<b>3 241</b>	<b>3 773</b>	<b>3 764</b>	<b>3 948</b>	<b>3 824</b>
<b>Discouraged work-seekers as % of working age</b>										
Male	5,8	7,5	8,0	8,2	8,5	8,5	9,9	10,0	10,2	9,9
Female	10,0	11,5	13,2	13,1	13,7	13,9	16,0	15,7	16,5	15,8
<b>Total</b>	<b>8,0</b>	<b>9,6</b>	<b>10,6</b>	<b>10,7</b>	<b>11,2</b>	<b>11,3</b>	<b>13,0</b>	<b>12,9</b>	<b>13,5</b>	<b>13,0</b>

Totals include unspecified sex.

Due to rounding, numbers do not necessarily add up to totals.



**2. Population of working age (15–65 years)**

**2.1 By sex and province**

Thousands

Sex and province	Sep 2000	Mar 2001	Sep 2001	Mar 2002	Sep 2002	Mar 2003	Sep 2003	Mar 2004	Sep 2004	Mar 2005
<b>Male</b>										
Western Cape	1 403	1 426	1 377	1 423	1 495	1 492	1 505	1 556	1 544	1 573
Eastern Cape	1 747	1 773	1 754	1 758	1 793	1 812	1 849	1 829	1 857	1 851
Northern Cape	281	284	278	290	277	278	276	265	281	280
Free State	976	999	1 010	951	933	960	954	966	938	929
KwaZulu-Natal	2 620	2 656	2 714	2 713	2 710	2 742	2 764	2 731	2 731	2 817
North West	1 156	1 153	1 185	1 166	1 209	1 215	1 222	1 210	1 186	1 172
Gauteng	3 070	3 144	3 037	3 172	3 201	3 217	3 170	3 261	3 327	3 314
Mpumalanga	895	910	905	913	938	947	953	949	922	933
Limpopo	1 327	1 312	1 353	1 311	1 348	1 314	1 304	1 310	1 409	1 374
<b>Total</b>	<b>13 474</b>	<b>13 657</b>	<b>13 615</b>	<b>13 697</b>	<b>13 903</b>	<b>13 975</b>	<b>13 997</b>	<b>14 077</b>	<b>14 194</b>	<b>14 243</b>
<b>Female</b>										
Western Cape	1 413	1 465	1 487	1 479	1 486	1 513	1 537	1 571	1 603	1 584
Eastern Cape	2 133	2 123	2 116	2 165	2 159	2 141	2 167	2 168	2 148	2 185
Northern Cape	282	281	283	280	285	286	286	289	286	287
Free State	956	947	935	964	967	958	966	977	972	994
KwaZulu-Natal	3 006	3 023	3 073	3 061	3 031	3 120	3 143	3 138	3 200	3 170
North West	1 145	1 167	1 148	1 146	1 127	1 164	1 168	1 172	1 213	1 256
Gauteng	2 779	2 770	2 825	2 871	2 866	2 892	2 937	2 954	2 927	3 015
Mpumalanga	979	990	965	978	987	974	986	1 004	1 022	1 012
Limpopo	1 635	1 669	1 670	1 687	1 708	1 730	1 751	1 774	1 725	1 760
<b>Total</b>	<b>14 329</b>	<b>14 435</b>	<b>14 503</b>	<b>14 634</b>	<b>14 615</b>	<b>14 778</b>	<b>14 941</b>	<b>15 045</b>	<b>15 097</b>	<b>15 263</b>
<b>Both sexes</b>										
Western Cape	2 817	2 891	2 865	2 903	2 981	3 004	3 041	3 127	3 147	3 157
Eastern Cape	3 880	3 896	3 870	3 923	3 952	3 952	4 016	3 997	4 005	4 036
Northern Cape	563	565	561	570	562	564	562	554	568	567
Free State	1 932	1 945	1 946	1 916	1 899	1 918	1 921	1 942	1 909	1 922
KwaZulu-Natal	5 626	5 680	5 787	5 775	5 745	5 863	5 907	5 869	5 931	6 000
North West	2 303	2 319	2 334	2 312	2 335	2 379	2 391	2 382	2 399	2 428
Gauteng	5 850	5 917	5 861	6 044	6 071	6 111	6 107	6 224	6 267	6 334
Mpumalanga	1 874	1 900	1 871	1 892	1 925	1 921	1 939	1 953	1 944	1 946
Limpopo	2 961	2 980	3 023	2 999	3 056	3 044	3 055	3 084	3 134	3 134
<b>Total</b>	<b>27 807</b>	<b>28 096</b>	<b>28 117</b>	<b>28 333</b>	<b>28 527</b>	<b>28 756</b>	<b>28 938</b>	<b>29 131</b>	<b>29 305</b>	<b>29 524</b>

Totals include unspecified sex.

Due to rounding, numbers do not necessarily add up to totals.

**2. Population of working age (15–65 years)**

**2.2 By sex and population group**

Thousands

Sex and population group	Sep 2000	Mar 2001	Sep 2001	Mar 2002	Sep 2002	Mar 2003	Sep 2003	Mar 2004	Sep 2004	Mar 2005
<b>Male</b>										
Black African	10 207	10 392	10 361	10 395	10 577	10 710	10 766	10 796	10 932	10 967
Coloured	1 187	1 217	1 186	1 223	1 235	1 233	1 230	1 249	1 263	1 287
Indian/Asian	399	397	414	414	413	419	423	430	416	434
White	1 655	1 634	1 640	1 649	1 661	1 603	1 570	1 593	1 551	1 533
<b>Total</b>	<b>13 474</b>	<b>13 657</b>	<b>13 615</b>	<b>13 697</b>	<b>13 903</b>	<b>13 975</b>	<b>13 997</b>	<b>14 077</b>	<b>14 194</b>	<b>14 243</b>
<b>Female</b>										
Black African	11 016	11 083	11 122	11 255	11 265	11 421	11 530	11 691	11 703	11 879
Coloured	1 339	1 347	1 348	1 354	1 367	1 377	1 396	1 405	1 422	1 400
Indian/Asian	385	392	424	425	418	430	408	406	407	402
White	1 570	1 597	1 593	1 588	1 547	1 541	1 601	1 538	1 544	1 565
<b>Total</b>	<b>14 329</b>	<b>14 435</b>	<b>14 503</b>	<b>14 634</b>	<b>14 615</b>	<b>14 778</b>	<b>14 941</b>	<b>15 045</b>	<b>15 097</b>	<b>15 263</b>
<b>Both sexes</b>										
Black African	21 226	21 475	21 483	21 651	21 846	22 132	22 295	22 496	22 645	22 860
Coloured	2 526	2 565	2 534	2 577	2 602	2 610	2 627	2 653	2 685	2 687
Indian/Asian	783	790	838	839	836	850	831	836	823	839
White	3 225	3 234	3 234	3 238	3 208	3 146	3 170	3 131	3 099	3 097
<b>Total</b>	<b>27 807</b>	<b>28 096</b>	<b>28 117</b>	<b>28 333</b>	<b>28 527</b>	<b>28 756</b>	<b>28 938</b>	<b>29 131</b>	<b>29 305</b>	<b>29 524</b>

Totals include unspecified sex and population group.  
 Due to rounding, numbers do not necessarily add up to totals.

**3. Economically active (workers and unemployed) aged 15–65 years**

**3.1 By sex and province**

Thousands

Sex and province	Sep 2000	Mar 2001	Sep 2001	Mar 2002	Sep 2002	Mar 2003	Sep 2003	Mar 2004	Sep 2004	Mar 2005
<b>Male</b>										
Western Cape	1 055	1 065	1 033	1 087	1 121	1 124	1 152	1 194	1 120	1 150
Eastern Cape	971	963	911	1 060	932	959	925	861	940	977
Northern Cape	208	206	191	203	193	193	185	179	183	182
Free State	688	704	703	682	630	669	645	638	609	616
KwaZulu-Natal	1 648	1 647	1 618	1 622	1 697	1 676	1 633	1 573	1 547	1 639
North West	750	737	724	725	766	754	757	742	694	699
Gauteng	2 349	2 451	2 287	2 343	2 387	2 373	2 360	2 402	2 481	2 435
Mpumalanga	605	605	566	587	598	593	579	585	593	595
Limpopo	652	620	645	629	606	617	545	548	633	615
<b>Total</b>	<b>8 926</b>	<b>8 998</b>	<b>8 677</b>	<b>8 937</b>	<b>8 930</b>	<b>8 958</b>	<b>8 779</b>	<b>8 721</b>	<b>8 800</b>	<b>8 908</b>
<b>Female</b>										
Western Cape	865	875	868	889	833	920	901	904	958	926
Eastern Cape	950	994	889	1 144	912	963	847	805	874	939
Northern Cape	145	144	135	137	136	145	126	126	120	138
Free State	515	544	495	550	513	525	488	493	479	529
KwaZulu-Natal	1 603	1 612	1 411	1 487	1 546	1 482	1 437	1 434	1 386	1 468
North West	504	535	478	475	474	486	448	472	466	531
Gauteng	1 751	1 760	1 772	1 741	1 791	1 800	1 765	1 771	1 642	1 730
Mpumalanga	517	538	460	472	460	466	461	460	456	457
Limpopo	624	686	650	682	632	673	606	617	589	558
<b>Total</b>	<b>7 474</b>	<b>7 687</b>	<b>7 158</b>	<b>7 577</b>	<b>7 297</b>	<b>7 459</b>	<b>7 079</b>	<b>7 082</b>	<b>6 969</b>	<b>7 276</b>
<b>Both sexes</b>										
Western Cape	1 920	1 940	1 900	1 976	1 954	2 044	2 053	2 098	2 078	2 077
Eastern Cape	1 921	1 957	1 800	2 204	1 844	1 922	1 772	1 666	1 814	1 916
Northern Cape	353	350	326	340	329	339	311	304	303	320
Free State	1 202	1 248	1 199	1 231	1 143	1 194	1 132	1 131	1 089	1 145
KwaZulu-Natal	3 251	3 259	3 029	3 109	3 245	3 159	3 070	3 006	2 933	3 112
North West	1 255	1 272	1 201	1 199	1 240	1 240	1 204	1 215	1 159	1 229
Gauteng	4 101	4 214	4 059	4 084	4 180	4 174	4 125	4 178	4 132	4 167
Mpumalanga	1 122	1 143	1 026	1 059	1 058	1 059	1 041	1 045	1 049	1 052
Limpopo	1 275	1 306	1 295	1 312	1 239	1 290	1 151	1 165	1 222	1 172
<b>Total</b>	<b>16 400</b>	<b>16 688</b>	<b>15 836</b>	<b>16 514</b>	<b>16 232</b>	<b>16 420</b>	<b>15 858</b>	<b>15 807</b>	<b>15 778</b>	<b>16 190</b>

Totals include unspecified sex.

Due to rounding, numbers do not necessarily add up to totals.

**3. Economically active (workers and unemployed) aged 15–65 years**

**3.2 By sex and population group**

Thousands

Sex and population group	Sep 2000	Mar 2001	Sep 2001	Mar 2002	Sep 2002	Mar 2003	Sep 2003	Mar 2004	Sep 2004	Mar 2005
<b>Male</b>										
Black African	6 453	6 514	6 211	6 412	6 414	6 484	6 326	6 269	6 365	6 448
Coloured	878	894	868	916	915	891	879	898	873	908
Indian/Asian	306	302	319	306	317	319	323	323	316	326
White	1 269	1 273	1 269	1 289	1 272	1 257	1 247	1 224	1 221	1 206
<b>Total</b>	<b>8 926</b>	<b>8 998</b>	<b>8 677</b>	<b>8 937</b>	<b>8 930</b>	<b>8 958</b>	<b>8 779</b>	<b>8 721</b>	<b>8 800</b>	<b>8 908</b>
<b>Female</b>										
Black African	5 565	5 769	5 224	5 601	5 402	5 492	5 141	5 197	5 093	5 381
Coloured	759	786	755	815	765	824	783	798	787	785
Indian/Asian	179	190	209	203	221	211	196	180	168	187
White	959	935	963	952	903	928	955	905	910	915
<b>Total</b>	<b>7 474</b>	<b>7 687</b>	<b>7 158</b>	<b>7 577</b>	<b>7 297</b>	<b>7 459</b>	<b>7 079</b>	<b>7 082</b>	<b>6 969</b>	<b>7 276</b>
<b>Both sexes</b>										
Black African	12 019	12 283	11 435	12 014	11 819	11 976	11 466	11 470	11 466	11 834
Coloured	1 638	1 679	1 623	1 731	1 679	1 716	1 661	1 696	1 660	1 693
Indian/Asian	485	492	528	509	540	530	519	504	484	516
White	2 229	2 210	2 232	2 241	2 175	2 187	2 202	2 129	2 132	2 121
<b>Total</b>	<b>16 400</b>	<b>16 688</b>	<b>15 836</b>	<b>16 514</b>	<b>16 232</b>	<b>16 420</b>	<b>15 858</b>	<b>15 807</b>	<b>15 778</b>	<b>16 190</b>

Totals include unspecified sex and population group.  
Due to rounding, numbers do not necessarily add up to totals.

**4. Workers (employers, employees and self-employed) aged 15–65 years**

**4.1 By sex and province**

Thousands

Sex and province	Sep 2000	Mar 2001	Sep 2001	Mar 2002	Sep 2002	Mar 2003	Sep 2003	Mar 2004	Sep 2004	Mar 2005
<b>Male</b>										
Western Cape	899	869	873	917	937	924	945	1 009	930	972
Eastern Cape	732	670	637	779	639	690	652	597	679	716
Northern Cape	177	169	152	159	160	153	146	145	148	140
Free State	552	543	548	511	481	496	500	512	459	475
KwaZulu-Natal	1 197	1 201	1 109	1 072	1 157	1 104	1 173	1 111	1 137	1 184
North West	572	567	565	553	581	564	567	555	522	536
Gauteng	1 848	1 853	1 679	1 735	1 776	1 753	1 791	1 851	1 939	1 994
Mpumalanga	482	469	432	450	450	435	451	465	472	463
Limpopo	483	447	447	430	434	400	388	395	485	431
<b>Total</b>	<b>6 943</b>	<b>6 788</b>	<b>6 442</b>	<b>6 606</b>	<b>6 614</b>	<b>6 520</b>	<b>6 613</b>	<b>6 640</b>	<b>6 772</b>	<b>6 911</b>
<b>Female</b>										
Western Cape	702	703	691	695	634	713	708	736	761	740
Eastern Cape	702	731	598	843	602	659	558	526	598	682
Northern Cape	111	98	93	87	87	88	83	91	81	86
Free State	366	362	327	338	329	324	315	326	318	319
KwaZulu-Natal	1 150	1 205	897	920	950	908	926	903	955	936
North West	324	350	293	283	279	275	295	286	313	339
Gauteng	1 165	1 170	1 145	1 132	1 126	1 135	1 195	1 168	1 125	1 228
Mpumalanga	341	373	294	293	290	298	326	311	316	301
Limpopo	435	492	400	421	382	382	405	407	398	361
<b>Total</b>	<b>5 295</b>	<b>5 485</b>	<b>4 739</b>	<b>5 011</b>	<b>4 678</b>	<b>4 782</b>	<b>4 810</b>	<b>4 752</b>	<b>4 866</b>	<b>4 991</b>
<b>Both sexes</b>										
Western Cape	1 601	1 572	1 564	1 612	1 571	1 637	1 652	1 745	1 691	1 711
Eastern Cape	1 434	1 401	1 236	1 622	1 241	1 350	1 210	1 123	1 278	1 398
Northern Cape	288	266	244	246	247	241	229	236	229	226
Free State	918	905	875	848	810	821	815	837	777	794
KwaZulu-Natal	2 347	2 407	2 006	1 992	2 108	2 013	2 099	2 013	2 092	2 125
North West	896	918	858	836	860	839	862	841	835	875
Gauteng	3 014	3 025	2 825	2 867	2 904	2 889	2 986	3 019	3 070	3 222
Mpumalanga	823	842	727	743	739	733	777	776	789	764
Limpopo	918	939	847	851	816	782	793	802	883	793
<b>Total</b>	<b>12 238</b>	<b>12 275</b>	<b>11 181</b>	<b>11 617</b>	<b>11 296</b>	<b>11 304</b>	<b>11 424</b>	<b>11 392</b>	<b>11 643</b>	<b>11 907</b>

Totals include unspecified sex.

Due to rounding, numbers do not necessarily add up to totals.

**4. Workers (employers, employees and self-employed) aged 15–65 years**

**4.2 By sex and population group**

Thousands

Sex and population group	Sep 2000	Mar 2001	Sep 2001	Mar 2002	Sep 2002	Mar 2003	Sep 2003	Mar 2004	Sep 2004	Mar 2005
<b>Male</b>										
Black African	4 705	4 601	4 255	4 398	4 397	4 355	4 426	4 427	4 610	4 725
Coloured	739	716	699	720	733	710	713	753	701	740
Indian/Asian	264	259	269	253	268	261	273	278	277	276
White	1 217	1 197	1 210	1 225	1 208	1 187	1 196	1 177	1 158	1 152
<b>Total</b>	<b>6 943</b>	<b>6 788</b>	<b>6 442</b>	<b>6 606</b>	<b>6 614</b>	<b>6 520</b>	<b>6 613</b>	<b>6 640</b>	<b>6 772</b>	<b>6 911</b>
<b>Female</b>										
Black African	3 668	3 865	3 099	3 389	3 116	3 151	3 153	3 123	3 261	3 360
Coloured	595	607	580	593	561	621	598	637	597	619
Indian/Asian	144	151	160	154	161	150	160	142	142	145
White	881	858	892	870	836	856	896	848	857	861
<b>Total</b>	<b>5 295</b>	<b>5 485</b>	<b>4 739</b>	<b>5 011</b>	<b>4 678</b>	<b>4 782</b>	<b>4 810</b>	<b>4 752</b>	<b>4 866</b>	<b>4 991</b>
<b>Both sexes</b>										
Black African	8 373	8 466	7 353	7 787	7 515	7 507	7 579	7 550	7 874	8 089
Coloured	1 335	1 323	1 279	1 314	1 294	1 331	1 311	1 390	1 298	1 359
Indian/Asian	408	410	429	407	430	412	433	420	419	423
White	2 097	2 057	2 102	2 095	2 044	2 045	2 092	2 025	2 016	2 014
<b>Total</b>	<b>12 238</b>	<b>12 275</b>	<b>11 181</b>	<b>11 617</b>	<b>11 296</b>	<b>11 304</b>	<b>11 424</b>	<b>11 392</b>	<b>11 643</b>	<b>11 907</b>

Totals include unspecified sex and population group.

Due to rounding, numbers do not necessarily add up to totals.

**4. Workers (employers, employees and self-employed) aged 15–65 years**

**4.3 By sex and occupation**

Thousands

Sex and occupation	Sep 2000	Mar 2001	Sep 2001	Mar 2002	Sep 2002	Mar 2003	Sep 2003	Mar 2004	Sep 2004	Mar 2005
<b>Male</b>										
Legislators, senior officials and managers	441	504	504	529	545	538	600	618	682	564
Professionals	314	248	257	276	284	309	304	281	230	282
Technical and associate professionals	526	578	554	597	582	533	527	553	525	512
Clerks	365	328	364	348	387	371	396	365	387	400
Service workers and shop and market sales workers	824	863	772	720	692	713	760	778	827	834
Skilled agricultural and fishery workers	633	556	399	624	479	241	212	192	179	222
Craft and related trades workers	1 367	1 297	1 302	1 225	1 241	1 207	1 241	1 230	1 303	1 400
Plant and machine operators and assemblers	1 053	1 006	965	987	1 011	1 022	1 002	1 019	952	1 033
Elementary occupation	1 349	1 330	1 281	1 237	1 323	1 503	1 510	1 555	1 628	1 606
Domestic workers	40	43	28	35	40	54	50	40	41	45
Unspecified/Others	32	34	17	27	31	30	12	11	17	13
<b>Total</b>	<b>6 943</b>	<b>6 788</b>	<b>6 442</b>	<b>6 606</b>	<b>6 614</b>	<b>6 520</b>	<b>6 613</b>	<b>6 640</b>	<b>6 772</b>	<b>6 911</b>
<b>Female</b>										
Legislators, senior officials and managers	133	128	160	179	186	170	222	216	228	234
Professionals	273	215	229	201	218	244	240	253	228	251
Technical and associate professionals	608	607	623	609	623	598	632	579	621	617
Clerks	691	743	726	760	721	730	761	806	782	797
Service workers and shop and market sales workers	646	807	657	604	552	578	600	569	626	625
Skilled agricultural and fishery workers	570	394	122	431	227	187	129	119	150	210
Craft and related trades workers	220	262	228	192	218	198	213	188	235	242
Plant and machine operators and assemblers	166	162	162	173	145	176	143	140	160	137
Elementary occupation	1 072	1 348	971	1 004	973	1 058	1 020	1 069	991	1 064
Domestic workers	890	800	854	842	804	830	846	807	840	805
Unspecified/others	28	19	*	15	11	14	*	*	*	*
<b>Total</b>	<b>5 295</b>	<b>5 485</b>	<b>4 739</b>	<b>5 011</b>	<b>4 678</b>	<b>4 782</b>	<b>4 810</b>	<b>4 752</b>	<b>4 866</b>	<b>4 991</b>

**4. Workers (employers, employees and self-employed) aged 15–65 years**

**4.3 By sex and occupation (concluded)**

Sex and occupation	Sep 2000	Mar 2001	Sep 2001	Mar 2002	Sep 2002	Mar 2003	Sep 2003	Mar 2004	Sep 2004	Mar 2005
<b>Both sexes</b>										
Legislators, senior officials and managers	574	633	664	708	731	708	822	834	910	798
Professionals	587	463	486	477	502	554	544	534	458	533
Technical and associate professionals	1 133	1 185	1 176	1 207	1 207	1 131	1 159	1 132	1 149	1 129
Clerks	1 056	1 071	1 091	1 108	1 110	1 100	1 156	1 172	1 169	1 198
Service workers and shop and market sales work	1 470	1 670	1 429	1 325	1 244	1 291	1 361	1 347	1 453	1 460
Skilled agricultural and fishery workers	1 203	951	521	1 055	706	428	341	311	329	432
Craft and related trades workers	1 587	1 559	1 529	1 417	1 460	1 405	1 454	1 417	1 538	1 642
Plant and machine operators and assemblers	1 218	1 168	1 127	1 160	1 156	1 198	1 145	1 158	1 113	1 172
Elementary occupation	2 421	2 679	2 253	2 241	2 296	2 561	2 530	2 624	2 619	2 670
Domestic workers	930	843	881	877	844	884	895	847	881	850
Unspecified/others	59	52	24	43	42	44	17	15	23	24
<b>Total</b>	<b>12 238</b>	<b>12 275</b>	<b>11 181</b>	<b>11 617</b>	<b>11 296</b>	<b>11 304</b>	<b>11 424</b>	<b>11 392</b>	<b>11 643</b>	<b>11 907</b>

\* For all values of 10 000 or lower the sample size is too small for reliable estimates

Totals include unspecified sex.

Due to rounding, numbers do not necessarily add up to totals.



**4. Workers (employers, employees and self-employed) aged 15–65 years**

**4.4 By sector and main industry**

**4.4.1 Both sexes**

Thousands

Sector and industry	Sep 2000	Mar 2001	Sep 2001	Mar 2002	Sep 2002	Mar 2003	Sep 2003	Mar 2004	Sep 2004	Mar 2005
<b>Formal</b>										
Agriculture, hunting, forestry and fishing	769	787	766	866	853	841	833	914	626	649
Mining and quarrying	586	561	550	539	553	553	550	554	404	417
Manufacturing	1 311	1 318	1 393	1 391	1 438	1 388	1 351	1 412	1 486	1 425
Electricity, gas and water supply	91	96	93	80	83	81	89	102	98	121
Construction	372	348	337	327	358	372	392	414	492	514
Wholesale and retail trade	1 440	1 381	1 431	1 398	1 353	1 452	1 519	1 527	1 648	1 691
Transport, storage and communication	455	425	430	468	467	450	410	454	441	453
Financial intermediation, insurance, real estate and business services	907	879	948	974	1 001	941	1 024	994	1 081	1 061
Community, social and personal services	1 850	1 728	1 805	1 858	1 854	1 952	2 004	1 997	2 015	2 045
Private households with employed persons	30	22	12	18	16	*	*	*	*	11
Unspecified/Other	50	49	27	43	56	37	26	21	16	12
<b>Total</b>	<b>7 860</b>	<b>7 594</b>	<b>7 793</b>	<b>7 963</b>	<b>8 034</b>	<b>8 069</b>	<b>8 206</b>	<b>8 397</b>	<b>8 318</b>	<b>8 398</b>
<b>Informal</b>										
Agriculture, hunting, forestry and fishing	1 076	743	383	864	551	444	366	341	426	514
Mining and quarrying	*	*	*	*	*	*	*	*	*	*
Manufacturing	237	270	203	190	186	187	194	178	220	220
Electricity, gas and water supply	*	*	*	*	*	*	*	*	*	*
Construction	273	248	276	240	234	207	265	237	317	294
Wholesale and retail trade	982	1 636	989	902	821	862	900	817	883	942
Transport, storage and communication	106	142	105	95	101	120	123	126	120	132
Financial intermediation, insurance, real estate and business services	50	110	78	61	79	85	70	73	60	72
Community, social and personal services	179	255	170	143	181	155	170	157	161	183
Private households with employed persons	180	165	138	186	169	203	172	170	183	214
Unspecified/Other	12	*	*	*	*	*	*	*	*	*
<b>Total</b>	<b>3 108</b>	<b>3 583</b>	<b>2 350</b>	<b>2 687</b>	<b>2 331</b>	<b>2 274</b>	<b>2 269</b>	<b>2 107</b>	<b>2 372</b>	<b>2 585</b>
<b>Domestic work</b>	<b>930</b>	<b>843</b>	<b>881</b>	<b>877</b>	<b>844</b>	<b>884</b>	<b>895</b>	<b>847</b>	<b>881</b>	<b>850</b>
<b>Unspecified sector</b>	<b>339</b>	<b>255</b>	<b>156</b>	<b>90</b>	<b>87</b>	<b>77</b>	<b>54</b>	<b>41</b>	<b>72</b>	<b>75</b>
<b>Total</b>	<b>12 238</b>	<b>12 275</b>	<b>11 181</b>	<b>11 617</b>	<b>11 296</b>	<b>11 304</b>	<b>11 424</b>	<b>11 392</b>	<b>11 643</b>	<b>11 907</b>

\* For all values of 10 000 or lower the sample size is too small for reliable estimates.

Totals include unspecified sex.

Due to rounding, numbers do not necessarily add up to totals.

*Labour force survey, September 2000 to March 2005: Historical series of revised estimates*

**4. Workers (employers, employees and self-employed) aged 15–65 years**

**4.4 By sector and main industry**

**4.4.2 Male**

Thousands

Sector and industry	Sep 2000	Mar 2001	Sep 2001	Mar 2002	Sep 2002	Mar 2003	Sep 2003	Mar 2004	Sep 2004	Mar 2005
<b>Formal</b>										
Agriculture, hunting, forestry and fishing	547	561	564	617	624	591	609	636	447	449
Mining and quarrying	570	543	532	521	530	531	527	531	393	400
Manufacturing	891	890	944	947	998	936	935	990	1 018	974
Electricity, gas and water supply	76	80	81	64	66	58	68	79	74	100
Construction	346	313	304	289	325	338	348	367	445	465
Wholesale and retail trade	819	766	816	795	768	836	862	888	944	980
Transport, storage and communication	376	335	343	361	374	346	310	353	325	342
Financial intermediation, insurance, real estate and business services	544	493	521	576	615	557	619	586	648	633
Community, social and personal services	834	802	830	851	833	907	921	874	941	976
Private households with employed persons	23	20	11	15	13	*	*	*	*	*
Unspecified/Other	29	27	16	24	29	21	14	17	*	*
<b>Total</b>	<b>5 056</b>	<b>4 831</b>	<b>4 962</b>	<b>5 062</b>	<b>5 177</b>	<b>5 124</b>	<b>5 219</b>	<b>5 326</b>	<b>5 254</b>	<b>5 335</b>
<b>Informal</b>										
Agriculture, hunting, forestry and fishing	480	349	249	416	306	257	230	205	248	279
Mining and quarrying	*	*	*	*	*	*	*	*	*	*
Manufacturing	108	117	87	87	78	76	91	86	97	104
Electricity, gas and water supply	*	*	*	*	*	*	*	*	*	*
Construction	251	230	250	212	208	195	230	221	289	269
Wholesale and retail trade	424	585	404	371	343	363	370	334	400	389
Transport, storage and communication	101	129	98	91	90	111	112	115	113	118
Financial intermediation, insurance, real estate and business services	32	64	54	41	58	42	42	48	45	43
Community, social and personal services	77	107	74	64	88	61	72	70	65	83
Private households with employed persons	148	143	126	164	157	182	160	160	178	195
Unspecified/Other	*	*	*	*	*	*	*	*	*	-
<b>Total</b>	<b>1 637</b>	<b>1 735</b>	<b>1 347</b>	<b>1 451</b>	<b>1 335</b>	<b>1 297</b>	<b>1 313</b>	<b>1 247</b>	<b>1 435</b>	<b>1 491</b>
<b>Domestic work</b>	<b>40</b>	<b>43</b>	<b>28</b>	<b>35</b>	<b>40</b>	<b>54</b>	<b>50</b>	<b>40</b>	<b>41</b>	<b>45</b>
<b>Unspecified sector</b>	<b>209</b>	<b>179</b>	<b>106</b>	<b>59</b>	<b>62</b>	<b>45</b>	<b>32</b>	<b>27</b>	<b>40</b>	<b>41</b>
<b>Total</b>	<b>6 943</b>	<b>6 788</b>	<b>6 442</b>	<b>6 606</b>	<b>6 614</b>	<b>6 520</b>	<b>6 613</b>	<b>6 640</b>	<b>6 772</b>	<b>6 911</b>

\* For all values of 10 000 or lower the sample size is too small for reliable estimates.

Totals include unspecified sex.

Due to rounding, numbers do not necessarily add up to totals.

*Labour force survey, September 2000 to March 2005: Historical series of revised estimates*

**4. Workers (employers, employees and self-employed) aged 15-65 years**

**4.4 By sector and main industry**

**4.4.3 Female**

Thousands

Sector and industry	Sep 2000	Mar 2001	Sep 2001	Mar 2002	Sep 2002	Mar 2003	Sep 2003	Mar 2004	Sep 2004	Mar 2005
<b>Formal</b>										
Agriculture, hunting, forestry and fishing	222	225	202	249	229	250	224	278	179	200
Mining and quarrying	16	18	19	18	23	22	23	23	11	17
Manufacturing	420	428	449	444	440	452	416	423	468	449
Electricity, gas and water supply	14	15	12	16	17	23	21	23	24	21
Construction	25	35	33	38	33	34	44	47	47	49
Wholesale and retail trade	621	614	615	603	585	615	658	638	704	712
Transport, storage and communication	79	91	86	107	93	104	101	102	114	110
Financial intermediation, insurance, real estate and business services	363	386	427	398	384	384	405	408	433	428
Community, social and personal services	1 016	926	975	1 006	1 019	1 044	1 083	1 123	1 071	1 066
Private households with employed persons	*	*	*	*	*	-	-	*	-	*
Unspecified/Other	20	22	12	19	27	16	11	*	*	*
<b>Total</b>	<b>2 803</b>	<b>2 762</b>	<b>2 832</b>	<b>2 901</b>	<b>2 853</b>	<b>2 944</b>	<b>2 987</b>	<b>3 071</b>	<b>3 058</b>	<b>3 058</b>
<b>Informal</b>										
Agriculture, hunting, forestry and fishing	597	394	134	448	244	187	135	136	178	235
Mining and quarrying	*	*	-	*	-	-	-	-	-	*
Manufacturing	129	153	116	103	108	111	103	91	123	116
Electricity, gas and water supply	-	*	-	-	-	*	*	-	-	-
Construction	23	18	26	28	26	11	35	16	29	26
Wholesale and retail trade	558	1 051	585	531	478	498	530	483	482	553
Transport, storage and communication	*	12	*	*	11	*	11	11	*	14
Financial intermediation, insurance, real estate and business services	18	46	25	20	21	43	29	25	16	29
Community, social and personal services	102	149	96	79	93	95	98	87	96	100
Private households with employed persons	32	22	13	22	12	21	12	*	*	19
Unspecified/Other	*	*	*	*	*	*	*	*	-	*
<b>Total</b>	<b>1 471</b>	<b>1 848</b>	<b>1 003</b>	<b>1 236</b>	<b>996</b>	<b>976</b>	<b>956</b>	<b>860</b>	<b>936</b>	<b>1 094</b>
<b>Domestic work</b>	<b>890</b>	<b>800</b>	<b>854</b>	<b>842</b>	<b>804</b>	<b>830</b>	<b>846</b>	<b>807</b>	<b>840</b>	<b>805</b>
<b>Unspecified sector</b>	<b>130</b>	<b>76</b>	<b>50</b>	<b>32</b>	<b>25</b>	<b>32</b>	<b>22</b>	<b>13</b>	<b>31</b>	<b>34</b>
<b>Total</b>	<b>5 295</b>	<b>5 485</b>	<b>4 739</b>	<b>5 011</b>	<b>4 678</b>	<b>4 782</b>	<b>4 810</b>	<b>4 752</b>	<b>4 866</b>	<b>4 991</b>

\* For all values of 10 000 or lower the sample size is too small for reliable estimates.

Totals include unspecified sex.

Due to rounding, numbers do not necessarily add up to totals.

*Labour force survey, September 2000 to March 2005: Historical series of revised estimates*

**5. The unemployed aged 15–65 years**

**5.1 By sex and province (official definition of unemployment)**

Thousands

Sex and province	Sep 2000	Mar 2001	Sep 2001	Mar 2002	Sep 2002	Mar 2003	Sep 2003	Mar 2004	Sep 2004	Mar 2005
<b>Male</b>										
Western Cape	155	196	160	170	184	200	207	185	190	179
Eastern Cape	239	293	274	281	293	269	273	264	261	261
Northern Cape	31	37	39	44	33	41	39	33	36	42
Free State	136	160	156	171	149	172	145	126	150	141
KwaZulu-Natal	451	446	509	550	541	572	460	462	410	455
North West	178	170	158	171	185	190	190	187	172	163
Gauteng	501	599	607	607	610	620	569	551	542	441
Mpumalanga	123	136	134	138	148	157	128	120	120	132
Limpopo	169	173	198	199	172	217	156	153	148	183
<b>Total</b>	<b>1 983</b>	<b>2 211</b>	<b>2 236</b>	<b>2 331</b>	<b>2 316</b>	<b>2 438</b>	<b>2 166</b>	<b>2 081</b>	<b>2 029</b>	<b>1 997</b>
<b>Female</b>										
Western Cape	163	172	176	194	199	207	193	168	196	187
Eastern Cape	248	263	291	301	311	303	289	279	276	258
Northern Cape	34	46	42	50	49	57	44	35	38	52
Free State	149	182	168	212	184	201	173	168	161	210
KwaZulu-Natal	453	406	514	567	595	574	511	531	431	532
North West	180	184	185	191	195	211	152	187	153	191
Gauteng	586	589	627	609	666	665	570	603	517	503
Mpumalanga	176	164	166	179	170	169	135	149	140	156
Limpopo	189	194	251	261	251	291	201	211	191	196
<b>Total</b>	<b>2 179</b>	<b>2 202</b>	<b>2 420</b>	<b>2 566</b>	<b>2 619</b>	<b>2 677</b>	<b>2 268</b>	<b>2 330</b>	<b>2 103</b>	<b>2 285</b>
<b>Both sexes</b>										
Western Cape	319	368	336	364	383	407	400	353	387	366
Eastern Cape	487	556	564	582	604	572	562	543	536	518
Northern Cape	66	83	81	94	82	98	82	68	74	94
Free State	284	342	324	383	333	373	317	294	311	351
KwaZulu-Natal	904	853	1 023	1 117	1 137	1 146	971	993	841	987
North West	358	354	343	363	380	400	342	374	325	354
Gauteng	1 087	1 189	1 235	1 217	1 276	1 286	1 139	1 158	1 062	945
Mpumalanga	299	300	300	317	318	326	263	269	260	288
Limpopo	358	368	449	460	422	508	358	364	339	379
<b>Total</b>	<b>4 162</b>	<b>4 413</b>	<b>4 655</b>	<b>4 897</b>	<b>4 936</b>	<b>5 116</b>	<b>4 434</b>	<b>4 415</b>	<b>4 135</b>	<b>4 283</b>

Totals include unspecified sex.

Due to rounding, numbers do not necessarily add up to totals.

**5. The unemployed aged 15–65 years**

**5.2 By sex and population group (official definition of unemployment)**

Thousands

Sex and population group	Sep 2000	Mar 2001	Sep 2001	Mar 2002	Sep 2002	Mar 2003	Sep 2003	Mar 2004	Sep 2004	Mar 2005
<b>Male</b>										
Black African	1 748	1 912	1 956	2 014	2 017	2 129	1 900	1 842	1 755	1 723
Coloured	139	177	169	196	182	181	165	145	172	168
Indian/Asian	41	43	50	54	50	58	50	45	39	50
White	52	76	59	64	64	70	50	47	63	53
<b>Total</b>	<b>1 983</b>	<b>2 211</b>	<b>2 236</b>	<b>2 331</b>	<b>2 316</b>	<b>2 438</b>	<b>2 166</b>	<b>2 081</b>	<b>2 029</b>	<b>1 997</b>
<b>Female</b>										
Black African	1 898	1 904	2 125	2 212	2 286	2 341	1 988	2 074	1 833	2 021
Coloured	164	179	175	221	204	204	184	161	190	166
Indian/Asian	35	39	49	49	60	60	36	38	26	42
White	79	77	71	82	66	71	59	57	53	54
<b>Total</b>	<b>2 179</b>	<b>2 202</b>	<b>2 420</b>	<b>2 566</b>	<b>2 619</b>	<b>2 677</b>	<b>2 268</b>	<b>2 330</b>	<b>2 103</b>	<b>2 285</b>
<b>Both sexes</b>										
Black African	3 645	3 817	4 081	4 227	4 304	4 470	3 888	3 921	3 592	3 745
Coloured	303	356	344	417	386	385	350	306	362	335
Indian/Asian	77	82	99	102	110	119	86	83	65	93
White	131	153	130	146	130	142	110	104	116	107
<b>Total</b>	<b>4 162</b>	<b>4 413</b>	<b>4 655</b>	<b>4 897</b>	<b>4 936</b>	<b>5 116</b>	<b>4 434</b>	<b>4 415</b>	<b>4 135</b>	<b>4 283</b>

Totals include unspecified sex and population group.  
 Due to rounding, numbers do not necessarily add up to totals.

**6. The not economically active aged 15–65 years**

**6.1 By sex and province**

Thousands

Sex and province	Sep 2000	Mar 2001	Sep 2001	Mar 2002	Sep 2002	Mar 2003	Sep 2003	Mar 2004	Sep 2004	Mar 2005
<b>Male</b>										
Western Cape	348	361	344	337	374	367	353	362	424	423
Eastern Cape	776	811	843	698	861	852	924	968	917	874
Northern Cape	72	78	87	87	83	84	91	87	98	98
Free State	288	295	307	270	302	291	310	328	328	313
KwaZulu-Natal	972	1 009	1 096	1 091	1 012	1 066	1 131	1 159	1 184	1 178
North West	405	415	462	441	443	461	466	468	492	473
Gauteng	721	693	750	829	814	844	810	860	846	878
Mpumalanga	290	306	339	326	340	354	374	364	329	338
Limpopo	675	691	709	682	742	697	759	762	776	760
<b>Total</b>	<b>4 548</b>	<b>4 659</b>	<b>4 937</b>	<b>4 760</b>	<b>4 972</b>	<b>5 017</b>	<b>5 218</b>	<b>5 356</b>	<b>5 394</b>	<b>5 335</b>
<b>Female</b>										
Western Cape	548	590	620	590	653	593	636	667	645	657
Eastern Cape	1 183	1 129	1 227	1 021	1 246	1 178	1 320	1 363	1 275	1 245
Northern Cape	137	138	148	144	149	141	160	163	167	149
Free State	441	403	440	414	454	433	479	484	493	465
KwaZulu-Natal	1 404	1 412	1 661	1 574	1 485	1 638	1 706	1 704	1 814	1 702
North West	641	632	671	672	653	678	721	699	748	726
Gauteng	1 027	1 010	1 052	1 130	1 074	1 092	1 173	1 183	1 285	1 285
Mpumalanga	462	452	505	506	528	508	524	544	566	556
Limpopo	1 011	983	1 020	1 005	1 076	1 057	1 145	1 156	1 136	1 202
<b>Total</b>	<b>6 856</b>	<b>6 747</b>	<b>7 344</b>	<b>7 057</b>	<b>7 318</b>	<b>7 319</b>	<b>7 862</b>	<b>7 963</b>	<b>8 128</b>	<b>7 988</b>
<b>Both sexes</b>										
Western Cape	897	951	964	927	1 027	961	988	1 029	1 069	1 080
Eastern Cape	1 959	1 939	2 070	1 719	2 108	2 031	2 244	2 331	2 191	2 120
Northern Cape	210	215	236	230	233	225	251	250	265	248
Free State	730	698	747	684	756	724	788	811	821	778
KwaZulu-Natal	2 376	2 421	2 758	2 666	2 500	2 704	2 837	2 862	2 998	2 888
North West	1 048	1 047	1 133	1 113	1 095	1 140	1 186	1 167	1 240	1 199
Gauteng	1 749	1 704	1 802	1 960	1 890	1 936	1 982	2 047	2 135	2 166
Mpumalanga	752	758	844	832	868	862	898	908	895	894
Limpopo	1 686	1 674	1 728	1 687	1 818	1 754	1 904	1 918	1 912	1 962
<b>Total</b>	<b>11 407</b>	<b>11 408</b>	<b>12 281</b>	<b>11 819</b>	<b>12 295</b>	<b>12 337</b>	<b>13 080</b>	<b>13 324</b>	<b>13 527</b>	<b>13 334</b>

Totals include unspecified sex.  
 Due to rounding, numbers do not necessarily add up to totals.

**6. The not economically active aged 15–65 years**

**6.2 By sex and population group**

Thousands

Sex and population group	Sep 2000	Mar 2001	Sep 2001	Mar 2002	Sep 2002	Mar 2003	Sep 2003	Mar 2004	Sep 2004	Mar 2005
<b>Male</b>										
Black African	3 754	3 878	4 150	3 983	4 163	4 226	4 440	4 527	4 566	4 518
Coloured	309	323	318	306	320	342	352	350	390	379
Indian/Asian	93	95	95	108	95	100	100	107	101	108
White	386	361	371	361	390	345	323	369	330	327
<b>Total</b>	<b>4 548</b>	<b>4 659</b>	<b>4 937</b>	<b>4 760</b>	<b>4 972</b>	<b>5 017</b>	<b>5 218</b>	<b>5 356</b>	<b>5 394</b>	<b>5 335</b>
<b>Female</b>										
Black African	5 450	5 314	5 899	5 654	5 863	5 929	6 389	6 494	6 610	6 498
Coloured	579	562	593	540	603	552	614	607	635	614
Indian/Asian	205	202	215	222	198	220	212	226	238	215
White	611	662	630	636	644	614	645	633	634	649
<b>Total</b>	<b>6 856</b>	<b>6 747</b>	<b>7 344</b>	<b>7 057</b>	<b>7 318</b>	<b>7 319</b>	<b>7 862</b>	<b>7 963</b>	<b>8 128</b>	<b>7 988</b>
<b>Both sexes</b>										
Black African	9 207	9 192	10 048	9 638	10 027	10 155	10 829	11 026	11 179	11 026
Coloured	888	885	911	846	923	894	965	957	1 025	993
Indian/Asian	298	297	310	330	296	320	312	332	339	324
White	997	1 024	1 002	997	1 034	959	968	1 002	967	977
<b>Total</b>	<b>11 407</b>	<b>11 408</b>	<b>12 281</b>	<b>11 819</b>	<b>12 295</b>	<b>12 337</b>	<b>13 080</b>	<b>13 324</b>	<b>13 527</b>	<b>13 334</b>

Totals include unspecified sex and population group.  
 Due to rounding, numbers do not necessarily add up to totals.

**7. Official unemployment rates (population aged 15–65 years)**

**7.1 By sex and province**

Sex and province	%									
	Sep 2000	Mar 2001	Sep 2001	Mar 2002	Sep 2002	Mar 2003	Sep 2003	Mar 2004	Sep 2004	Mar 2005
<b>Male</b>										
Western Cape	14,7	18,4	15,5	15,6	16,4	17,8	18,0	15,5	17,0	15,6
Eastern Cape	24,6	30,4	30,0	26,5	31,4	28,0	29,5	30,7	27,7	26,7
Northern Cape	15,0	18,1	20,6	21,7	17,3	21,0	20,9	18,7	19,4	23,0
Free State	19,7	22,8	22,1	25,1	23,6	25,8	22,5	19,8	24,7	22,8
KwaZulu-Natal	27,4	27,1	31,5	33,9	31,9	34,1	28,2	29,4	26,5	27,8
North West	23,7	23,1	21,9	23,7	24,1	25,2	25,0	25,2	24,7	23,3
Gauteng	21,3	24,4	26,6	25,9	25,6	26,1	24,1	22,9	21,9	18,1
Mpumalanga	20,3	22,5	23,7	23,4	24,8	26,5	22,1	20,5	20,3	22,2
Limpopo	25,9	27,9	30,7	31,6	28,4	35,2	28,7	27,9	23,3	29,8
<b>Total</b>	<b>22,2</b>	<b>24,6</b>	<b>25,8</b>	<b>26,1</b>	<b>25,9</b>	<b>27,2</b>	<b>24,7</b>	<b>23,9</b>	<b>23,1</b>	<b>22,4</b>
<b>Female</b>										
Western Cape	18,9	19,7	20,3	21,9	23,9	22,5	21,4	18,6	20,5	20,2
Eastern Cape	26,1	26,4	32,7	26,3	34,1	31,5	34,1	34,7	31,6	27,4
Northern Cape	23,7	32,0	31,3	36,6	35,7	39,3	34,6	27,7	32,1	37,9
Free State	28,9	33,5	33,9	38,6	35,9	38,2	35,4	34,0	33,6	39,7
KwaZulu-Natal	28,3	25,2	36,4	38,1	38,5	38,7	35,5	37,0	31,1	36,2
North West	35,8	34,5	38,7	40,3	41,1	43,3	34,0	39,5	32,9	36,0
Gauteng	33,5	33,5	35,4	35,0	37,2	37,0	32,3	34,1	31,5	29,0
Mpumalanga	34,1	30,6	36,0	37,9	37,0	36,2	29,4	32,4	30,6	34,1
Limpopo	30,2	28,3	38,6	38,3	39,6	43,2	33,2	34,1	32,5	35,2
<b>Total</b>	<b>29,2</b>	<b>28,6</b>	<b>33,8</b>	<b>33,9</b>	<b>35,9</b>	<b>35,9</b>	<b>32,0</b>	<b>32,9</b>	<b>30,2</b>	<b>31,4</b>
<b>Both sexes</b>										
Western Cape	16,6	19,0	17,7	18,4	19,6	19,9	19,5	16,8	18,6	17,6
Eastern Cape	25,4	28,4	31,4	26,4	32,7	29,8	31,7	32,6	29,6	27,1
Northern Cape	18,6	23,8	25,0	27,7	24,9	28,9	26,4	22,4	24,5	29,4
Free State	23,6	27,4	27,0	31,1	29,1	31,2	28,0	26,0	28,6	30,6
KwaZulu-Natal	27,8	26,2	33,8	35,9	35,0	36,3	31,6	33,0	28,7	31,7
North West	28,6	27,9	28,6	30,3	30,6	32,3	28,4	30,8	28,0	28,8
Gauteng	26,5	28,2	30,4	29,8	30,5	30,8	27,6	27,7	25,7	22,7
Mpumalanga	26,7	26,3	29,2	29,9	30,1	30,8	25,3	25,7	24,8	27,4
Limpopo	28,0	28,1	34,6	35,1	34,1	39,4	31,1	31,2	27,8	32,4
<b>Total</b>	<b>25,4</b>	<b>26,4</b>	<b>29,4</b>	<b>29,7</b>	<b>30,4</b>	<b>31,2</b>	<b>28,0</b>	<b>27,9</b>	<b>26,2</b>	<b>26,5</b>

Totals include unspecified sex.

Due to rounding, numbers do not necessarily add up to totals.



**7. Official unemployment rates (population aged 15–65 years)**

**7.2 By sex and population group**

Sex and population group	%									
	Sep 2000	Mar 2001	Sep 2001	Mar 2002	Sep 2002	Mar 2003	Sep 2003	Mar 2004	Sep 2004	Mar 2005
<b>Male</b>										
Black African	27,1	29,4	31,5	31,4	31,5	32,8	30,0	29,4	27,6	26,7
Coloured	15,8	19,9	19,5	21,4	19,9	20,3	18,8	16,2	19,7	18,6
Indian/Asian	13,6	14,4	15,7	17,5	15,6	18,2	15,5	14,0	12,4	15,4
White	4,1	6,0	4,7	5,0	5,0	5,6	4,0	3,9	5,1	4,4
<b>Total</b>	<b>22,2</b>	<b>24,6</b>	<b>25,8</b>	<b>26,1</b>	<b>25,9</b>	<b>27,2</b>	<b>24,7</b>	<b>23,9</b>	<b>23,1</b>	<b>22,4</b>
<b>Female</b>										
Black African	34,1	33,0	40,7	39,5	42,3	42,6	38,7	39,9	36,0	37,6
Coloured	21,6	22,8	23,1	27,2	26,6	24,7	23,6	20,2	24,1	21,2
Indian/Asian	19,6	20,5	23,5	24,0	27,1	28,7	18,4	21,0	15,4	22,6
White	8,2	8,2	7,4	8,6	7,4	7,7	6,2	6,3	5,8	5,9
<b>Total</b>	<b>29,2</b>	<b>28,6</b>	<b>33,8</b>	<b>33,9</b>	<b>35,9</b>	<b>35,9</b>	<b>32,0</b>	<b>32,9</b>	<b>30,2</b>	<b>31,4</b>
<b>Both sexes</b>										
Black African	30,3	31,1	35,7	35,2	36,4	37,3	33,9	34,2	31,3	31,6
Coloured	18,5	21,2	21,2	24,1	23,0	22,4	21,1	18,0	21,8	19,8
Indian/Asian	15,8	16,7	18,8	20,1	20,4	22,4	16,6	16,5	13,4	18,0
White	5,9	6,9	5,8	6,5	6,0	6,5	5,0	4,9	5,4	5,1
<b>Total</b>	<b>25,4</b>	<b>26,4</b>	<b>29,4</b>	<b>29,7</b>	<b>30,4</b>	<b>31,2</b>	<b>28,0</b>	<b>27,9</b>	<b>26,2</b>	<b>26,5</b>

Totals include unspecified sex.

Due to rounding, numbers do not necessarily add up to totals.

**8. Labour force participation rates (population aged 15–65 years)**

**8.1 By sex and province**

Sex and province	%									
	Sep 2000	Mar 2001	Sep 2001	Mar 2002	Sep 2002	Mar 2003	Sep 2003	Mar 2004	Sep 2004	Mar 2005
<b>Male</b>										
Western Cape	75,2	74,7	75,0	76,3	75,0	75,4	76,5	76,7	72,5	73,1
Eastern Cape	55,6	54,3	51,9	60,3	52,0	52,9	50,0	47,1	50,6	52,8
Northern Cape	74,2	72,6	68,6	70,1	69,8	69,6	66,9	67,4	65,1	65,0
Free State	70,5	70,4	69,6	71,6	67,6	69,6	67,5	66,1	65,0	66,3
KwaZulu-Natal	62,9	62,0	59,6	59,8	62,6	61,1	59,1	57,6	56,6	58,2
North West	64,9	64,0	61,0	62,2	63,4	62,0	61,9	61,3	58,5	59,6
Gauteng	76,5	78,0	75,3	73,9	74,6	73,8	74,5	73,6	74,6	73,5
Mpumalanga	67,6	66,4	62,6	64,3	63,7	62,6	60,8	61,7	64,3	63,8
Limpopo	49,1	47,3	47,6	48,0	45,0	47,0	41,8	41,8	44,9	44,7
<b>Total</b>	<b>66,2</b>	<b>65,9</b>	<b>63,7</b>	<b>65,2</b>	<b>64,2</b>	<b>64,1</b>	<b>62,7</b>	<b>62,0</b>	<b>62,0</b>	<b>62,5</b>
<b>Female</b>										
Western Cape	61,2	59,7	58,3	60,1	56,1	60,8	58,6	57,5	59,7	58,5
Eastern Cape	44,5	46,8	42,0	52,8	42,3	45,0	39,1	37,1	40,7	43,0
Northern Cape	51,3	51,1	47,6	48,8	47,6	50,8	44,1	43,5	41,8	48,0
Free State	53,8	57,5	53,0	57,0	53,1	54,8	50,5	50,5	49,3	53,2
KwaZulu-Natal	53,3	53,3	45,9	48,6	51,0	47,5	45,7	45,7	43,3	46,3
North West	44,0	45,8	41,6	41,4	42,1	41,7	38,3	40,3	38,4	42,2
Gauteng	63,0	63,5	62,7	60,6	62,5	62,2	60,1	60,0	56,1	57,4
Mpumalanga	52,8	54,3	47,7	48,3	46,6	47,9	46,8	45,8	44,6	45,1
Limpopo	38,1	41,1	38,9	40,4	37,0	38,9	34,6	34,8	34,1	31,7
<b>Total</b>	<b>52,2</b>	<b>53,3</b>	<b>49,4</b>	<b>51,8</b>	<b>49,9</b>	<b>50,5</b>	<b>47,4</b>	<b>47,1</b>	<b>46,2</b>	<b>47,7</b>
<b>Both sexes</b>										
Western Cape	68,2	67,1	66,3	68,1	65,6	68,0	67,5	67,1	66,0	65,8
Eastern Cape	49,5	50,2	46,5	56,2	46,7	48,6	44,1	41,7	45,3	47,5
Northern Cape	62,8	61,9	58,0	59,6	58,6	60,0	55,3	55,0	53,4	56,4
Free State	62,2	64,1	61,6	64,3	60,2	62,2	58,9	58,2	57,0	59,5
KwaZulu-Natal	57,8	57,4	52,3	53,8	56,5	53,9	52,0	51,2	49,5	51,9
North West	54,5	54,9	51,5	51,9	53,1	52,1	50,4	51,0	48,3	50,6
Gauteng	70,1	71,2	69,3	67,6	68,9	68,3	67,5	67,1	65,9	65,8
Mpumalanga	59,9	60,1	54,9	56,0	54,9	55,1	53,7	53,5	54,0	54,1
Limpopo	43,1	43,8	42,8	43,7	40,5	42,4	37,7	37,8	39,0	37,4
<b>Total</b>	<b>59,0</b>	<b>59,4</b>	<b>56,3</b>	<b>58,3</b>	<b>56,9</b>	<b>57,1</b>	<b>54,8</b>	<b>54,3</b>	<b>53,8</b>	<b>54,8</b>

Totals include unspecified sex.

Due to rounding, numbers do not necessarily add up to totals.

**8. Labour force participation rates (population aged 15–65 years)**

**8.2 By sex and population group**

Sex and population group	%									
	Sep 2000	Mar 2001	Sep 2001	Mar 2002	Sep 2002	Mar 2003	Sep 2003	Mar 2004	Sep 2004	Mar 2005
<b>Male</b>										
Black African	63,2	62,7	59,9	61,7	60,6	60,5	58,8	58,1	58,2	58,8
Coloured	74,0	73,4	73,2	74,9	74,1	72,3	71,4	72,0	69,1	70,6
Indian/Asian	76,7	76,2	77,2	73,9	76,9	76,2	76,4	75,2	75,8	75,2
White	76,7	77,9	77,4	78,1	76,6	78,4	79,4	76,8	78,7	78,7
<b>Total</b>	<b>66,2</b>	<b>65,9</b>	<b>63,7</b>	<b>65,2</b>	<b>64,2</b>	<b>64,1</b>	<b>62,7</b>	<b>62,0</b>	<b>62,0</b>	<b>62,5</b>
<b>Female</b>										
Black African	50,5	52,1	47,0	49,8	48,0	48,1	44,6	44,5	43,5	45,3
Coloured	56,7	58,3	56,0	60,1	55,9	59,9	56,1	56,8	55,4	56,1
Indian/Asian	46,6	48,5	49,2	47,7	52,7	48,9	48,1	44,4	41,4	46,6
White	61,1	58,5	60,4	59,9	58,4	60,2	59,7	58,8	58,9	58,5
<b>Total</b>	<b>52,2</b>	<b>53,3</b>	<b>49,4</b>	<b>51,8</b>	<b>49,9</b>	<b>50,5</b>	<b>47,4</b>	<b>47,1</b>	<b>46,2</b>	<b>47,7</b>
<b>Both sexes</b>										
Black African	56,6	57,2	53,2	55,5	54,1	54,1	51,4	51,0	50,6	51,8
Coloured	64,8	65,5	64,0	67,2	64,5	65,7	63,2	63,9	61,8	63,0
Indian/Asian	61,9	62,4	63,0	60,6	64,6	62,4	62,5	60,2	58,8	61,4
White	69,1	68,3	69,0	69,2	67,8	69,5	69,5	68,0	68,8	68,5
<b>Total</b>	<b>59,0</b>	<b>59,4</b>	<b>56,3</b>	<b>58,3</b>	<b>56,9</b>	<b>57,1</b>	<b>54,8</b>	<b>54,3</b>	<b>53,8</b>	<b>54,8</b>

Totals include unspecified sex and population group.  
 Due to rounding, numbers do not necessarily add up to totals.

**9. Labour absorption rates (population aged 15–65 years)**

**9.1 By sex and province**

Sex and province	%									
	Sep 2000	Mar 2001	Sep 2001	Mar 2002	Sep 2002	Mar 2003	Sep 2003	Mar 2004	Sep 2004	Mar 2005
<b>Male</b>										
Western Cape	64,1	60,9	63,4	64,4	62,6	62,0	62,8	64,8	60,2	61,8
Eastern Cape	41,9	37,8	36,3	44,3	35,6	38,1	35,3	32,6	36,6	38,7
Northern Cape	63,1	59,4	54,5	54,9	57,8	55,0	52,9	54,8	52,5	50,0
Free State	56,6	54,4	54,2	53,7	51,6	51,7	52,4	53,0	48,9	51,2
KwaZulu-Natal	45,7	45,2	40,8	39,5	42,7	40,3	42,4	40,7	41,6	42,0
North West	49,5	49,2	47,7	47,4	48,1	46,4	46,4	45,9	44,0	45,7
Gauteng	60,2	58,9	55,3	54,7	55,5	54,5	56,5	56,8	58,3	60,2
Mpumalanga	53,8	51,5	47,8	49,2	47,9	46,0	47,4	49,0	51,2	49,6
Limpopo	36,4	34,1	33,0	32,8	32,2	30,5	29,8	30,1	34,4	31,4
<b>Total</b>	<b>51,5</b>	<b>49,7</b>	<b>47,3</b>	<b>48,2</b>	<b>47,6</b>	<b>46,7</b>	<b>47,2</b>	<b>47,2</b>	<b>47,7</b>	<b>48,5</b>
<b>Female</b>										
Western Cape	49,6	48,0	46,5	47,0	42,7	47,1	46,1	46,8	47,5	46,7
Eastern Cape	32,9	34,5	28,3	38,9	27,9	30,8	25,7	24,3	27,8	31,2
Northern Cape	39,2	34,7	32,7	30,9	30,6	30,8	28,9	31,5	28,4	29,8
Free State	38,3	38,2	35,0	35,0	34,0	33,8	32,6	33,3	32,7	32,1
KwaZulu-Natal	38,2	39,9	29,2	30,1	31,4	29,1	29,5	28,8	29,8	29,5
North West	28,3	30,0	25,5	24,7	24,8	23,6	25,3	24,4	25,8	27,0
Gauteng	41,9	42,3	40,5	39,4	39,3	39,2	40,7	39,5	38,5	40,7
Mpumalanga	34,8	37,7	30,5	30,0	29,3	30,6	33,1	31,0	31,0	29,7
Limpopo	26,6	29,5	23,9	24,9	22,4	22,1	23,1	22,9	23,0	20,5
<b>Total</b>	<b>37,0</b>	<b>38,0</b>	<b>32,7</b>	<b>34,2</b>	<b>32,0</b>	<b>32,4</b>	<b>32,2</b>	<b>31,6</b>	<b>32,2</b>	<b>32,7</b>
<b>Both sexes</b>										
Western Cape	56,8	54,4	54,6	55,5	52,7	54,5	54,3	55,8	53,7	54,2
Eastern Cape	37,0	36,0	31,9	41,4	31,4	34,1	30,1	28,1	31,9	34,6
Northern Cape	51,1	47,1	43,5	43,1	44,0	42,7	40,7	42,6	40,3	39,8
Free State	47,5	46,5	45,0	44,3	42,7	42,8	42,4	43,1	40,7	41,3
KwaZulu-Natal	41,7	42,4	34,7	34,5	36,7	34,3	35,5	34,3	35,3	35,4
North West	38,9	39,6	36,8	36,2	36,8	35,3	36,1	35,3	34,8	36,0
Gauteng	51,5	51,1	48,2	47,4	47,8	47,3	48,9	48,5	49,0	50,9
Mpumalanga	43,9	44,3	38,9	39,3	38,4	38,2	40,1	39,7	40,6	39,3
Limpopo	31,0	31,5	28,0	28,4	26,7	25,7	26,0	26,0	28,2	25,3
<b>Total</b>	<b>44,0</b>	<b>43,7</b>	<b>39,8</b>	<b>41,0</b>	<b>39,6</b>	<b>39,3</b>	<b>39,5</b>	<b>39,1</b>	<b>39,7</b>	<b>40,3</b>

Totals include unspecified sex.

Due to rounding, numbers do not necessarily add up to totals.

**9. Labour absorption rates (population aged 15–65 years)**

**9.2 By sex and population group**

Sex and population group	Sep 2000	Mar 2001	Sep 2001	Mar 2002	Sep 2002	Mar 2003	Sep 2003	Mar 2004	Sep 2004	Mar 2005
<b>Male</b>										
Black African	46,1	44,3	41,1	42,3	41,6	40,7	41,1	41,0	42,2	43,1
Coloured	62,3	58,8	59,0	58,9	59,3	57,6	58,0	60,3	55,5	57,5
Indian/Asian	66,3	65,2	65,0	61,0	64,9	62,3	64,5	64,7	66,5	63,6
White	73,5	73,3	73,8	74,3	72,7	74,1	76,2	73,9	74,7	75,2
<b>Total</b>	<b>51,5</b>	<b>49,7</b>	<b>47,3</b>	<b>48,2</b>	<b>47,6</b>	<b>46,7</b>	<b>47,2</b>	<b>47,2</b>	<b>47,7</b>	<b>48,5</b>
<b>Female</b>										
Black African	33,3	34,9	27,9	30,1	27,7	27,6	27,3	26,7	27,9	28,3
Coloured	44,5	45,0	43,0	43,8	41,0	45,1	42,8	45,3	42,0	44,2
Indian/Asian	37,4	38,6	37,7	36,3	38,5	34,9	39,2	35,1	35,0	36,0
White	56,1	53,7	56,0	54,8	54,1	55,6	56,0	55,1	55,5	55,0
<b>Total</b>	<b>37,0</b>	<b>38,0</b>	<b>32,7</b>	<b>34,2</b>	<b>32,0</b>	<b>32,4</b>	<b>32,2</b>	<b>31,6</b>	<b>32,2</b>	<b>32,7</b>
<b>Both sexes</b>										
Black African	39,4	39,4	34,2	36,0	34,4	33,9	34,0	33,6	34,8	35,4
Coloured	52,8	51,6	50,5	51,0	49,7	51,0	49,9	52,4	48,4	50,6
Indian/Asian	52,1	51,9	51,2	48,5	51,4	48,4	52,1	50,3	50,9	50,4
White	65,0	63,6	65,0	64,7	63,7	65,0	66,0	64,7	65,1	65,0
<b>Total</b>	<b>44,0</b>	<b>43,7</b>	<b>39,8</b>	<b>41,0</b>	<b>39,6</b>	<b>39,3</b>	<b>39,5</b>	<b>39,1</b>	<b>39,7</b>	<b>40,3</b>

Totals include unspecified sex.

Due to rounding, numbers do not necessarily add up to totals.